



**FIND OUT WHAT'S COOKING
ON THE DINING CAR
MARCH TO NOVEMBER 2025**



THE DINING CAR

EST. 2013

**Further details at
www.rail.im**

CLASSIC
STEAM

THEME
STEAM

DINNER
CLUB

STATION
LEGENDS

BIKERS
STEAM

FAMILY
EVENTS

SUNSET
DINING

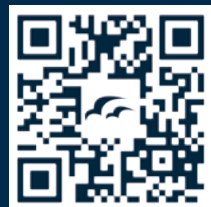


For a great choice of quality self catering holiday accommodation in beautiful coastal, countryside and village locations on the Isle of Man.



To book your perfect Island Escape today visit www.islandescapes.im

  @ISLANDESCAPESIM



THE DINING CAR

EST. 2013

It's full steam ahead for great gastronomical experiences with Isle of Man Railways during 2025.

Built in 1905 and restored in 2013, the plush Dining Car is celebrating 12 years in service. One of only a handful of fine dining narrow gauge dining cars in the world. The sumptuous surroundings of its saloon carriages hark back to the Pullman-style fine dining of yesteryear although there is nothing old fashioned about the fabulous food served on board.

Mouth-watering menus offer the best seasonal home grown produce teamed with carefully chosen wines, beers or soft drinks from the Bar Car. Choose from Classic Steam, Theme Steam, Family Events, Sunset Dining experiences and much more...

You can also book the Dining Car for birthday and wedding parties, corporate or other private hire events, which can be tailored to your individual requirements through hireme@gov.im.

Please advise of any dietary requirements at time of booking. For some multiple courses not all requests can be catered for and menus may vary according to seasonal fare availability.

Images are for illustrative purposes only. Front cover image: Debbie Hay.

MEMORIES YOU WILL TREASURE...

CLASSIC STEAM Page 4-7

Bushy's Pie & Mash | Spooky Pie & Mash | Steam Train Lunch | Autumnal Steam | Steam Quiz

THEME STEAM Page 8-14

French Gourmet Night | Isle of Cider - Sausage & Mash | Midsummer Gala
Summertime Steam Murder Mystery | Wine Down Tasting Special
Gin & Sin Fynoderee Special | Fawlty Towers Special | Hop-Tu-Naa Express Lunch
Hop-Tu-Naa Murder Mystery

DINNER CLUB Page 16-17

Curry Dinner Club | Mexican Dinner Club | Spanish Dinner Club | Chinese Dinner Club

STATION LEGENDS Page 20-21

Elvis | ABBA | Bee Gees & 70s Era | Elton John

DOWN THE LINE Page 22-23

BIKERS STEAM Page 26- 27

Racer's Pie & Mash Dinner Club | Isle of Cider Racer's Special | Racer's Sunday Lunch

FAMILY EVENTS Page 28-34

Mother's Italian Special | Mother's Day Sunday Lunch
Mother's Day Afternoon Tea | Easter Sunday Lunch
Manxman Sunday Lunch | Father's Day Sunday Lunch | Grandparents' Day

SUNSET DINING Page 35-37

Italian Special | Indian Special | American Special

SAMPLE MENUS Page 38-43

TO BOOK

☎ **01624 697457**
E: steamdining@gov.im

- Advance booking essential.
- Your ticket includes return train travel and meal.
- You must board the Dining Car 20 minutes prior to departure.
- Menu choices may be required at time of booking.

**FULL TERMS
AND
CONDITIONS
ON PAGE 45**

BUSHY'S PIE & MASH

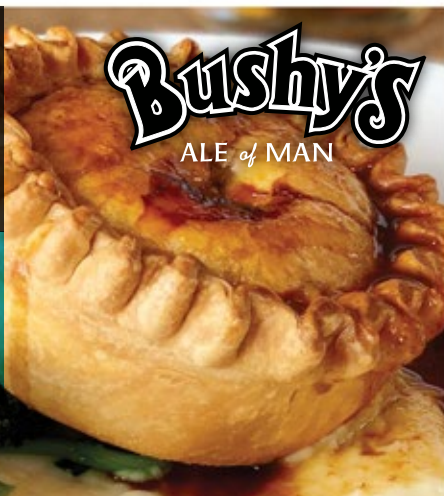
The Station Masters hearty homemade pie with delicious fillings on the steam railway. A selection of classic desserts will be offered on your return journey. Fully stocked bar on board, with a range of real ales from Bushy's.

£36^{PP}

Price includes
two courses and
return travel
to Castletown

**TRANSPORT
FESTIVAL
SPECIAL**

24 JULY 2025



The Pie and Mash train is available on the
following Thursdays, selected Fridays and
Saturdays throughout the season

Departs Douglas 19:00 | Returns by 22:00

Additional Bushy's Dads Special Pie and Mash train on
Saturday 14 June

APR	MAY	JUN	JUL	AUG	SEP
19	8	14, 26	10, 24	7, 21	4, 18

SPOOKY PIE & MASH

FRIDAY 31 OCT

A meaty gruesome pie and mash is the perfect treat
for Hop-tu-Naa. Dine at your peril on our ghostly
steam train.

£36^{PP}

EARLY DEPARTURE

Departs Douglas 18:00

Returns by 21:00



STEAM TRAIN LUNCH

Take a break and relax down the line while enjoying our beautiful Isle of Man countryside over lunch.
A steam dining experience for all!

£35^{PP}

Price includes
two courses and
return travel
to Castletown



All Thursday lunch trains
Departs Douglas 12:10 | Returns by 14:40

JUN	AUG	SEP
26	7	18

AUTUMNAL STEAM

Enjoy our "new" home comfort two course Autumnal Steam with an early departure at 6pm for family and friends. Take a night off from cooking and spoil yourselves!

£36^{PP}

Price includes
two courses and
return travel
to Castletown



Early Friday supper trains Departs Douglas 18:00 | Returns by 21:00

FRIDAY 19 SEPT

FRIDAY 17 OCT

STEAM QUIZ

£37^{PP}

Price includes two courses, quiz
and return travel to Port Erin

TRANSPORT FESTIVAL QUIZ NIGHT

Departs Douglas 19:00 | Returns by 22:30

FRIDAY 25 JUL

How good is your general knowledge? Time to team up with family and friends for an exciting Summertime Quiz night. Fun prizes to be won including 2025 Dining Car Experiences. Book early to avoid disappointment, and be the winners on the nights. For all ages to enjoy!



FRENCH GOURMET NIGHT

An evening of French cuisine is something special to savour. So step on to the dining car and relax in a bygone age of travel while enjoying a little bit of France. C'est délicieux!

£42^{PP}

Price includes
three courses
and return travel
to Castletown

All Saturday evening trains Departs Douglas 19:00 | Returns by 22:00

SATURDAY 12 APR

SATURDAY 17 MAY

SATURDAY 12 JUL

SATURDAY 18 OCT

ISLE OF CIDER - SAUSAGE & MASH

FRIDAY 9 MAY

£36^{PP}

Price includes two courses and
return travel to Castletown

Departs Douglas 19:00 | Returns by 22:00

Collaborating with our local Isle of Cider makers enjoy a flavoursome sausage and mash supper and dessert with a range of promotional seasonal and non-alcoholic ciders to buy on board.



MIDSUMMER GALA

SATURDAY 28 JUN

Celebrate the longest day (21st June) of the year in style on our elegant Midsummer Gala Train. Canapé reception on arrival followed by a four course dinner on board. Smart attire and fancy frocks!

£69^{PP} | Departs Douglas 19:00
Returns by 22:30

Price includes canapés and four courses and return travel to Castletown



THE TICKETHALL

Champagne Reception with Summer Canapés.
Accompanied by local musician

MIDSUMMER GALA DINNER

APPETIZER

King Prawns, Salsa Verde with Crostinis

...

Vegan Gnocchi Seared, Salsa Verde (VE)

— • • —

STARTER

Caesar Salad, Quail Egg, Crispy Pancetta

...

Heritage Beetroot and Toasted Walnuts (VE)

— • • —

MAIN

12-Hour Cooked Short Rib of Beef, Root Vegetables, Pomme Dauphinoise, Jus

...

Vegetarian Wellington, Root Vegetables, Pomme Dauphinoise, Jus (VE)

— • • —

DESSERT

Rich Black Forest Cheesecake with White and Dark Chocolate Shards, Cream and Boozy Fruit Coulis

SUMMERTIME STEAM MURDER MYSTERY

SATURDAY 2 AUG

Drama and suspicion all the way down the line on our murder mystery adventure dining experience. Between three courses can you work out who's innocent and who's the murderer as clue by clue the high season mystery unfolds?

£49^{PP}

Departs Douglas 19:00
Returns by 22:30

Price includes three courses and return travel to Castletown



WINE DOWN TASTING SPECIAL

SATURDAY 16 AUG

Isle of Man Railways have paired with Wine Down to share in wine regions from around the world. Complemented with a three course meal from the master chefs at The Tickethall Restaurant. A full-bodied dinner date not to be missed!

£55^{PP}

Departs Douglas 19:00
Returns by 22:00

Price includes three courses, with pairing wines and return travel to Castletown



GIN & SIN FYNODEREE SPECIAL

SATURDAY 23 AUG

£42^{PP}

Price includes three courses and
return travel to Castletown

Departs Douglas 19:00 | Returns by 22:00

Three courses of award-winning gin accompaniments have been created by the dining car chefs to ensure a Fynoderee match made in heaven. Fully stocked bar on board. Gin's away!



FAWLTY TOWERS SPECIAL £69^{PP}

Price includes three courses with Comedy Chaos and return travel to Castletown

SATURDAY 27 SEPT

Departs Douglas 19:00 | Returns by 22:00

SUNDAY 28 SEPT

Departs Douglas 12:10 | Returns by 14:40

Isle of Man Railways is bringing Fawlty Towers to the Dining Car. A hilarious dining experience where the customers enjoy three courses with a loco kitchen run by Basil, Sybil and Manuel.

The Chef's drunk, there's a 'longtail' on the loose, the Health Inspector is on his waywhat could possibly go wrong! Basil only manages to make matters worse, Sybil has been hitting the brandy and Manuel is... Well, he's just Manuel. Fire drills, Manx kippers and corpses. With everything building to a typically Fawlty Towers climax. Don't miss out on the best dining experience of 2025 on the Isle of Man – book soon!



HOP-TU-NAA EXPRESS LUNCH

FRIDAY 31 OCT

Whatever you'd like to dress up as for Hop-tu-Naa come along and be your spooky self. Storytelling, creative craft, owl surprises with a slimy toenail two course lunch.

£30 | **£15**
PER ADULT | PER CHILD
(between 2-12 years)

Departs Douglas 12:10
Returns by 14:40

Price includes two courses and return travel to Castletown



HOP-TU-NAA MURDER MYSTERY

SATURDAY 1 NOV

During the wizarding hour a murder has been committed aboard the eerie train. Between three Hop-tu-Naa courses can you solve the ghostly web of trick or treat clues and who is in the shadows waiting to ensnare their next victim...

£49^{PP} | Departs Douglas 19:00
Returns by 22:30

Price includes three courses and return travel to Castletown





Energy FM

FM - DAB - ONLINE



play Energy FM



www.energyfm.net

manx NEWS

**Isle of Man News - Weather
Sport - Politics - Features**

The Island's News Service
www.manx.news

the SOUND

Greatest Hits & Easy Listening Radio

The Sound is the Isle of Man's greatest hits and easy listening radio station.

Listen online and also on your smart speaker by downloading our Alexa skill.



www.soundradio.im

DINNER CLUB

£36^{PP}

Price includes two courses and
return travel to Castletown

CURRY DINNER CLUB



A taste of spicy rich authentic flavours with the Curry Dinner Club with accompanying sides and a delicious dessert selection to enjoy on your return journey.

Departs Douglas 19:00 | Returns by 22:00



SATURDAY 5 APR

FRIDAY 20 JUN

MEXICAN DINNER CLUB



Its Fajitas Friday. Our American and Mexican cuisines create bold Tex-Mex flavours. Whether you enjoy burritos, nachos or enchiladas there will be something for everyone to share in.

Departs Douglas 19:00 | Returns by 22:00



MEXICAN SPECIAL

£40^{PP} - FRIDAY 8 AUG

Departs Douglas 19:00
Returns by 22:30

Price includes three courses
and return travel to Port Erin

FRIDAY 6 JUN

DINNER CLUB

£36^{PP}

Price includes two courses and
return travel to Castletown

SPANISH DINNER CLUB



A vibrant fiesta evening with mouth-watering Spanish tapas sharing plates. Bring a friend, the whole family or just treat yourself and your partner to a memorable evening of tapas delights!

Departs Douglas 19:00 | Returns by 22:00

CHINESE DINNER CLUB



Exotic mix of authentic spices with delicious rice dishes. A choice of Southeast Asian desserts round off your dining experience.

Departs Douglas 19:00 | Returns by 22:00



Price includes two courses
and return travel to Port Erin

FRIDAY 27 JUN

FRIDAY 22 AUG



FRIDAY 5 SEP

FRIDAY 24 OCT



Bushy's
ALE of MAN

We are delighted to supply our top quality Manx brewed beers to Isle of Man Railways as well as the Island's finest establishments.

We are also proud to support Manx farmers by being the only brewery that uses locally grown barley in our beers.

For a full list of Bushy's stockists go to Instagram or Facebook.

bushys.com | info@bushys.com

The Spirits of Mann



Drinking Manx?
Ask for Fynoderee.

THE
FYNODEREE
DISTILLERY

www.fynoderee.com



SCAN CODE

Failt Erriu/Welcome...
to the home of
Mythically Manx Spirits!

THE
FYNODEREE
DISTILLERY



SCAN CODE

Book a Distillery Tour or enjoy perfect serves and cocktails
at the legendary Fyn Bar. Why not catch the vintage
MER tram that stops right opposite our doors?

For bookings, opening hours, and our full range of
Manx made spirits, head to: www.fynoderee.com

Find us at Parsonage Road, Ramsey, IM8 2EE



STATION LEGENDS

Don't forget to dress up for the full station legend experience while you sing down the line. Fully stocked bar onboard!

ELVIS

SATURDAY 3 MAY

Sharing the stage with the King of Rock and Roll, we will be going on a Memphis celebration of Elvis Presley's greatest hits as we shake, rattle and roll. So put your blue suede shoes on, dress as the King and tap your feet as you enjoy a three course dining experience.

Departs Douglas 19:00 | Returns by 22:00



£42^{PP}

Price includes three courses and return travel to Castletown

ABBA

SATURDAY 5 JUL

Winner takes it all with a 'Here we go again' fabulous three course Mamma Mia dining experience. DJ mixes will add to your Super Trouper night aboard the dining car.

Departs Douglas 19:00 | Returns by 22:00



STATION LEGENDS

Don't forget to dress up for the full station legend experience!

£42^{PP}

Price includes three courses
and return travel to Castletown

BEE GEES & 70S ERA

SATURDAY 9 AUG

Whether you're Barry, Robin, Maurice Gibb or another prominent 70's performer share in the Bee Gees disco era and get that Saturday Night Fever vibe.

Departs Douglas 19:00 | Returns by 22:00

ELTON JOHN

SATURDAY 25 OCT

Don't let the sun go down without boarding the unique dining car for a three course crocodile rock music night. Whether you want to be a tiny dancer and tap your toes while dining or sing Bennie and the Jets it will be a yellow brick road event to remember.

Departs Douglas 19:00 | Returns by 22:00

A poster for the Bee Gees & the Seventies event. It features the text 'BeeGees & the Seventies' in a stylized font. Below the text are silhouettes of three people walking. The background is a collage of colorful patterns, including polka dots and a grid. A large vinyl record is partially visible on the right side of the poster.

BeeGees
& the Seventies

A poster for the Elton John event. It features a black and white line drawing of Elton John's face and upper body. Below the drawing is his name 'Elton John' in a large, stylized script. The background is a simple landscape with a blue sky and green hills. A large vinyl record is partially visible on the right side of the poster.

Elton John

Down the line...

MARCH	
Mother's Italian Special	Sat 29 Mar
Mother's Day Sunday Lunch	Sun 30 Mar
Mother's Day Afternoon Tea	Sun 30 Mar

APRIL	
Curry Dinner Club	Sat 5 Apr
French Gourmet	Sat 12 Apr
Bushy's Pie & Mash	Sat 19 Apr
Easter Sunday Lunch	Sun 20 Apr
ITALIAN SPECIAL	Sat 26 Apr

MAY	
Station Legends - ELVIS	Sat 3 May
Manxman Sunday Lunch	Sun 4 May
Bushy's Pie & Mash	Thurs 8 May
Isle of Cider Sausage & Mash	Fri 9 May
INDIAN SPECIAL	Sat 10 May
French Gourmet	Sat 17 May
Manxman Sunday Lunch	Sun 18 May
Racer's Pie & Mash Dinner Club	Fri 23 May
ITALIAN SPECIAL	Fri 30 May
Isle of Cider Racers Special	Sat 31 May

JUNE	
Mexican Dinner Club	Fri 6 Jun
Racer's Pie & Mash Dinner Club	Sat 7 Jun
Racer's Sunday Lunch Train	Sun 8 Jun
Bushy's Dads Pie & Mash	Sat 14 Jun
Father's Day Sunday Lunch Train	Sun 15 Jun
Curry Dinner Club	Fri 20 Jun
Steam Train Lunch	Thurs 26 Jun
Bushy's Pie & Mash	Thurs 26 Jun
Spanish Dinner Club	Fri 27 Jun
Midsummer Gala	Sat 28 Jun

JULY

Station Legends - ABBA	Sat 5 Jul
Manxman Sunday Lunch	Sun 6 Jul
Bushy's Pie & Mash	Thurs 10 Jul
Indian Special	Fri 11 Jul
French Gourmet	Sat 12 Jul
AMERICAN SPECIAL	Sat 19 Jul
Manxman Sunday Lunch	Sun 20 Jul
Transport Festival Special Pie & Mash Train	Thurs 24 Jul
Transport Festival Quiz Night - (Sausage & Mash)	Fri 25 Jul

AUGUST

Summertime Steam Murder Mystery	Sat 2 Aug
Manxman Sunday Lunch	Sun 3 Aug
Steam Train Lunch	Thurs 7 Aug
Bushy's Pie & Mash	Thurs 7 Aug
Mexican Dinner Club	Fri 8 Aug
Station Legends - Bee Gees & 70's era	Sat 9 Aug
Wine Down Tasting	Sat 16 Aug
Manxman Sunday Lunch	Sun 17 Aug
Bushy's Pie & Mash	Thurs 21 Aug
Spanish Dinner Club	Fri 22 Aug
Gin & Sin Fynoderee Special	Sat 23 Aug
Isle of Cider Racers Special	Sat 30 Aug
Manxman Sunday Lunch	Sun 31 Aug

SEPTEMBER

Bushy's Pie & Mash	Thurs 4 Sept
Chinese Dinner Club	Fri 5 Sept
INDIAN SPECIAL	Sat 13 Sept
Manxman Sunday Lunch	Sun 14 Sept
Steam Train Lunch	Thurs 18 Sept
Bushy's Pie & Mash	Thurs 18 Sept
Autumnal Steam	Fri 19 Sept
FAWLTY TOWERS SPECIAL	Sat 27 Sept
FAWLTY TOWERS SPECIAL	Sun 28 Sept

OCTOBER

ITALIAN SPECIAL	Sat 4 Oct
Grandparents Day	Sun 5 Oct
Autumnal Steam	Fri 17 Oct
French Gourmet	Sat 18 Oct
Chinese Dinner Club	Fri 24 Oct
Station Legends - Elton John	Sat 25 Oct
Hop Tu Naa Express Lunch	Fri 31 Oct
Spooky Pie & Mash	Fri 31 Oct

NOVEMBER

Hop Tu Naa Murder Mystery	Sat 1 Nov
------------------------------	-----------

To book T:01624 697457 E:steamdining@gov.im

All aboard...

Keeping you connected wherever
the journey takes you

local & sport
news

podcasts

Island stories

great music



manx radio



YOU'RE INVITED

Join us on the manx radio
gold express...

The greatest hits on earth all
day, every day.

Travel back in time with only the
greatest hits from across the years!

ON SMART SPEAKER
AT [GOLD.MANXRADIO.COM](https://gold.manxradio.com)





FRANKIE SAYS RELAX

Let us do the printing.

**Words
& Spaces
Printing**



01624 662573

www.wordsandspaces.im

frankthepug@wordsandspaces.co.im

RACER'S PIE & MASH DINNER CLUB

FRIDAY 23 MAY

SATURDAY 7 JUN

Enjoy a hearty pit stop from the roar of the bikes. Sit down to a homemade pie filled with flavoursome ingredients on the steam railway. A selection of TT classic desserts will be offered on your return journey. Fully stocked bar on board.

£36^{PP}

Departs Douglas 19:00
Returns by 22:00

Price includes two courses and return travel to Castletown



ISLE OF CIDER RACER'S SPECIAL

SATURDAY 31 MAY

SATURDAY 30 AUG

Take the evening steam and enjoy a hearty supper while getting into racing mode. Fully stocked bar on board!

£36^{PP}

Departs Douglas 19:00
Returns by 22:00

Price includes two courses and return travel to Castletown

RACER'S SUNDAY LUNCH

SUNDAY 8 JUN

A luxury two course Sunday lunch with all the trimmings for family and friends to share as you travel through beautiful Manx countryside.

£36
PER ADULT

£18
PER CHILD
(between 2-12 years)

Departs Douglas 12:10
Returns by 14:40

Price includes two courses and return travel to Castletown



MOTHER'S ITALIAN SPECIAL

SATURDAY 29 MAR

Don't forget your "Mamma"! It's Mother's Day weekend so she may prefer to go out on a Saturday night for an early Italian three course special on the stunning steam Dining Car. Buon appetito!

£40 | **£18**
PER ADULT | PER CHILD
(between 2-12 years)

Price includes three courses and return travel to Castletown

Departs Douglas 18:00 | Returns by 21:00



MOTHER'S DAY SUNDAY LUNCH

SUNDAY 30 MAR

Mother's Day pamper time on the steam railways with a spring time three course Sunday lunch. Early booking is recommended as tickets sell fast!

£42
PER ADULT

£20
PER CHILD
(between 2-12 years)

Price includes three courses and return travel to Castletown

Departs Douglas 12:10 | Returns by 14:40



MOTHER'S DAY AFTERNOON TEA

SUNDAY 30 MAR

Mothering Sunday pamper time on the steam railways with a relaxing afternoon tea of sweet and savoury treats. Fully stocked bar on board for Mum.

£36 | **£17**
PER ADULT | PER CHILD
(between 2-12 years)

Price includes a selection of cakes, scones and sandwiches and return travel to Castletown

Departs Douglas 16:10 | Returns by 18:00



EASTER SUNDAY LUNCH

SUNDAY 20 APR

Easter Sunday on the steam railways with a spring time three course Sunday lunch or take time out for a relaxing afternoon tea of sweet and savoury treats. Early booking is recommended as tickets sell Eggstremely fast!

£42 **£20**
PER ADULT PER CHILD
(between 2-12 years)

Price includes three courses and return travel to Castletown

Departs Douglas 12:10 | Returns by 14:40



MANXMAN SUNDAY LUNCH

A luxury two course Sunday lunch with all the trimmings for family and friends to share as you travel through beautiful Manx countryside.

£36
PER ADULT

£18
PER CHILD
(between 2-12 years)

Price includes two courses and return travel to Castletown



All Sunday lunch trains Departs Douglas 12:10 | Returns by 14:40

MAY	JUL	AUG	SEP
4, 18	6, 20	3, 17, 31	14

FATHER'S DAY SUNDAY LUNCH

SUNDAY 15 JUN

Surprise Dad with a Sunday lunch celebration or take the afternoon tea train. A great way to thank him for everything he does while enjoying a relaxing train ride together.

£42 | **£20**
PER ADULT | PER CHILD
(between 2-12 years)

Price includes two courses and return travel to Castletown

Departs Douglas 12:10 | Returns by 14:40



GRANDPARENTS' DAY

SUNDAY 5 OCT

Let's celebrate our fabulous grandparents and thank them for all their wonderful support. A perfect Sunday lunch treat for all the family to share in with lots of laughter down the line.

£36 **£18**
PER ADULT PER CHILD
(between 2-12 years)

Price includes two courses and return travel to Castletown

Departs Douglas 12:10 | Returns by 14:40



SUNSET DINING

ITALIAN SPECIAL

SATURDAY 26 APR

FRIDAY 30 MAY

SATURDAY 4 OCT

£40^{PP}

Price includes three courses and
return travel to Castletown

Departs Douglas 19:00 | Returns by 22:00

Per favore, sit back and enjoy a fresh, full flavoured Italian three course menu while travelling through the Isle of Man's stunning countryside, with divine Italian desserts for all.



SUNSET DINING

INDIAN SPECIAL

SATURDAY 10 MAY

SATURDAY 13 SEP

FRIDAY 11 JUL

£40^{PP}

Price includes three courses and
return travel to Castletown

Departs Douglas 19:00 | Returns by 22:00

£40^{PP}

Price includes three courses and
return travel to **Port Erin**

Departs Douglas 19:00 | Returns by 22:30

Take away your family, friends and work colleagues on a three course Indian culinary adventure. Time out to relax is important so spoil yourself.



SUNSET DINING

AMERICAN SPECIAL

SATURDAY 19 JUL

Travel on the Isle of Man Railways into the heart of the U.S.A. Glazed ribs, delicious burgers and sweet dessert treats to give our customers a chance to celebrate a special occasion or just escape from the kitchen! Fully stocked bar onboard.

£40^{PP}

Price includes three courses and return travel to Castletown

Departs Douglas 19:00 | Returns by 22:00



SAMPLE MENUS

If you have a dietary or allergen requirement please let The Tickethall Cafe and Restaurant know on **01624 627888** or by emailing **thetickethall.ion@gmail.com**

FAMILY EVENTS

MOTHER'S ITALIAN SPECIAL

THREE COURSES

SUNSET DINING

ITALIAN SPECIAL

THREE COURSES

SHARING ANTIPASTO

Cured Meats, Breads, Olives and Vegetables

— • • —

MAIN

Lasagna Ragu with Pasta Sheets and Creamy Sauce topped with Parmesan

• • •

Chicken, Penne, Mushroom, Creamy Garlic Sauce

• • •

Pasta alla Norma is a delicious Sicilian Pasta Dish with Eggplant, Marinara and Basil

— • • —

DESSERT

Tiramisu, Traditional Creamy Coffee, Boozy Love Affair

• • •

Cream-Filled Profiteroles, with Chocolate Topping

FAMILY EVENTS

MOTHER'S DAY EASTER SUNDAY FATHER'S DAY GRANDPARENT'S DAY

THREE COURSES

MANXMAN SUNDAY LUNCH

TWO COURSES (MAIN AND DESSERT)

BIKERS STEAM

RACER'S SUNDAY LUNCH

TWO COURSES (MAIN AND DESSERT)

STARTER

Chicken Strips, Garlic Mayo and Salad

• • •

Chicken Liver Parfait, Red Onion Jam, Crackers

— • • —

MAIN

Roast Beef, Roasties, Yorkshire Pudding and Rich Red Wine Reduction

• • •

Roast Chicken Breast, Roast Potatoes and Pan-Made Chicken Jus

• • •

Sweet Potato Roast, Spinach and Rich Tomato Sauce

All main courses are served with seasonal vegetables

— • • —

DESSERT

Sticky Toffee Pudding, Toffee Sauce and Cream

• • •

Strawberry and Bourbon Vanilla Cheesecake and Cream

SAMPLE MENUS

If you have a dietary or allergen requirement please let The Tickethall Cafe and Restaurant know on **01624 627888** or by emailing **thetickethall.ion@gmail.com**.

DINNER CLUB

CURRY DINNER CLUB

TWO COURSES (MAIN & DESSERT)

SUNSET DINING

INDIAN SPECIAL

THREE COURSES

SHARING STARTER

Bhaji, Samosa, Pakora and Dips



MAIN

Chicken Korma is a Mild, Aromatic and Creamy Curry Dish from Ancient Mughlai Cuisine



Beef Rogan Josh is a Kashmiri Curry of Lamb, Spices, Tomato and Yogurt



Courgetti and Aubergine Korma is a Mild, Aromatic and Creamy Curry Dish with Coconut and Coriander



DESSERT PLATE

Kulfi Style Mousse,
with Nuts and Dried Fruit



Lemon Cheesecake
with Chai Cream Sauce

STATION LEGENDS

ELVIS

THREE COURSES

SUNSET DINING

AMERICAN SPECIAL

THREE COURSES

STARTER

Slow-braised 'Hip Swival' Ribs
in Sticky BBQ Sauce



MAIN

Kentucky Style Chicken, Slaw, House Chips,
and Dipping Sauce



6oz Graceland Cheeseburger,
House Chips, House Sauce,
Token Leaf, Slaw



DESSERT

'THE PRESLEY'

Maple Glazed Peanut, Banana,
Bread and Butter Pudding and Cream



Sticky Toffee Pudding with Toffee Sauce,
Fresh Cream

SAMPLE MENUS

If you have a dietary or allergen requirement please let The Tickethall Cafe and Restaurant know on **01624 627888** or by emailing **thetickethall.ion@gmail.com**

DINNER CLUB

SPANISH DINNER CLUB

TWO COURSES (MAIN AND DESSERT)

SUNSET DINING

SPANISH SPECIAL

THREE COURSES

STARTER

Patatas Bravas with Smoked Garlic Ajillo (v,ve)

...

Meatballs in Tomato Sauce with Crispy Bread

— • • —

MAIN

Paella, Pork, Chorizo, Fish, Rice and Vegetables

...

Beef Guiso - Rich Beef Stew Seasoned Spanish Herbs and Red Wine, served with Aromatic Rice

— • • —

DESSERT

San Sebastian Cheesecake accompanied with a Rich Orange Syrup

...

Tarta de Manzana - Caramelised Apples with Vanilla, Puff Pastry and Fresh Cream

STATION LEGENDS

ABBA , BEE GEES AND ELTON JOHN

THREE COURSES

THEME STEAM

MURDER MYSTERY'S WINE DOWN TASTING SPECIAL GIN & SIN FYNODEREE SPECIAL FAWLTY TOWERS SPECIAL

THREE COURSES

STARTER

Tender Asparagus, Hollandaise Sauce, Watercress and Parmigiano Reggiano

...

Chicken Liver Parfait, Red Onion Jam, Crackers

— • • —

MAIN

12-Hour Cooked Short Rib Beef, Creamy Mash Potato and Sticky Braising Liquor

...

Crispy Fried Chicken Breast in a Kiev Style Chicken Sauce

All served with seasonal vegetables

— • • —

DESSERT

Chocolate Ganache Tart, Chantilly and Fruit

...

Sticky Toffee Pudding, Toffee Sauce and Cream

SAMPLE MENUS

If you have a dietary or allergen requirement please let The Tickethall Cafe and Restaurant know on **01624 627888** or by emailing **thetickethall.ion@gmail.com**

THEME STEAM

FRENCH GOURMET NIGHT

THREE COURSES

STARTER

Rip and Dip Creamy Brie Sharing Pot with French Bread



MAIN

Chicken Fricassee



Beef Bourguignon



Vegetable Fricassee

All served with seasonal vegetables



DESSERT

Chocolate Tart with Chantilly Cream with Fresh Fruit



Raspberry and Cognac Crème Brûlée with Sablé Biscuit

DINNER CLUB

MEXICAN DINNER CLUB

THREE COURSES

STARTER

Tostada Bites
(ve,gf option)



MAIN

Ola Chicken Enchiladas



Tuscan Chicken with Mediterranean Seasoning
in a Cream Sauce



Medium Hot Beef Chilli, Rice,
Sour Cream and Hand Cut Salsa



DESSERT

Cinnamon Sugar Churros with Chocolate Dipping Sauce



Margarita Cheesecake and Citrus Syrup

SAMPLE MENUS

If you have a dietary or allergen requirement please let The Tickethall Cafe and Restaurant know on **01624 627888** or by emailing **thetickethall.iom@gmail.com**

DINNER CLUB

CHINESE DINNER CLUB

TWO COURSES (MAIN & DESSERT)

MAIN

Sweet and Sour Chicken with Fried Rice

...

Beef Chow Mein and Prawn Crackers

— • • —

DESSERT

Sesame Custard Tart and Pineapple

...

Mango Cheesecake, Cream and Mango

THEME STEAM

ISLE OF CIDER SAUSAGE & MASH

TWO COURSES (MAIN & DESSERT)

BIKERS STEAM

ISLE OF CIDER RACER'S SPECIAL

THREE COURSES

STARTER

Cornish Pasty and Pickle
West Country Rarebit and Pickle

— • • —

MAIN

A Trio of the Finest Speciality Sausages,
Creamed Mash Potato,
Red Onion Confit and Red Wine Jus

...

Roasted Root Vegetable Stack, Creamed Mash Potato
with Garden Peas and Vegetable Jus

— • • —

DESSERT

Eton Mess Style Knickerbocker Glory

...

Sticky Toffee Pudding, Toffee Sauce and Cream

SAMPLE MENUS

If you have a dietary or allergen requirement please let The Tickethall Cafe and Restaurant know on **01624 627888** or by emailing **thetickethall.ion@gmail.com**

CLASSIC STEAM
BUSHY'S PIE & MASH
SPOOKY PIE & MASH

TWO COURSES (MAIN & DESSERT)

THEME STEAM
STEAM QUIZ

TWO COURSES (MAIN & DESSERT)

MAIN

The Station Master's Beef and Root Vegetable Pie

...

Roasted Root Vegetable Pie (V)

All served with Creamed Mash Potato and Mushy Peas

— • • • —

DESSERT

Apple Crumble with Vanilla Custard

...

Sticky Toffee Pudding, Toffee Sauce and Cream

CLASSIC STEAM

STEAM TRAIN LUNCH
AUTUMNAL STEAM

TWO COURSES (MAIN & DESSERT)

MAIN

Steak and Ale Stew with Dumpling

...

Chicken, Cheesy Crumble

All served with seasonal vegetables

— • • • —

DESSERT

Apple Crumble with Vanilla Custard

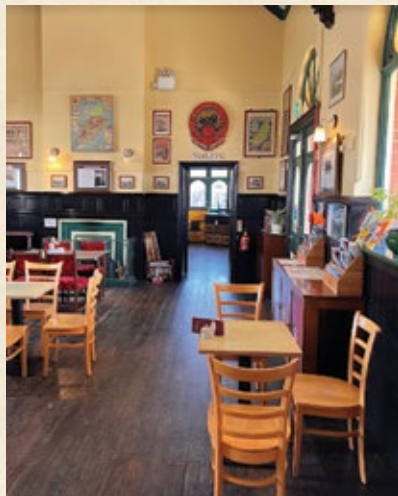
...

Sticky Toffee Pudding, Toffee Sauce and Cream

THE WHISTLESTOP COFFEE SHOP

PORT ERIN RAILWAY STATION

A friendly community coffee shop within Port Erin Railway Station for friends and family. Whether it's just a cuppa and a cake or a leisurely lunch sitting by the fireside there's something for everyone to enjoy at this heritage railway coffee shop stop at the end of the line.



Fresh coffee and homemade cakes and food served.

Open daily 9:30am - 4:00pm

For more information go to www.facebook.com/whistlestopiom

TICKET PURCHASE POLICY – DINING CAR AND SPECIAL EXCURSIONS

- Full payment is required at time of booking to confirm a reservation.
- Please check your booking details carefully with the Booking Clerk as mistakes cannot always be rectified later.
- All cancellations and changes to reservations must be advised with a minimum of 14 day's notice before the event date to receive a full refund. After 14 days 20% of the full price will be reimbursed. No refund will be due on the day of departure.
- All changes to reservations must be advised with a minimum 14 day's notice before the event date. Changes received after this may not be accepted.
- In the circumstance that Isle of Man Railways need to cancel a Dining Car event completely a full refund or credit voucher will be offered.
- We do not guarantee that the trains will arrive or depart at the times stated and we reserve the right to cancel, alter or suspend any train without notice, or to substitute a different engine should this be necessary for whatever reason.
- Excursions may be cancelled or rescheduled for a variety of reasons. If the excursion is cancelled, please contact us for information on receiving a refund or rescheduling the excursion.
- If an excursion is rescheduled, ticket holders will be offered tickets to the rescheduled excursion, equivalent to the face value of the ticket. If a service is cancelled, ticket holders will be offered travel on an alternative excursion (subject to availability) or a refund up to the value on the ticket.
- All meal options are required at the time of booking to confirm your reservation.

- Any food allergies should be notified on booking and again on boarding. Our Tickethall kitchen is an environment that contains all allergens and therefore there is a chance of contamination.
- No alcohol other than that purchased on the Dining Car may be consumed by passengers.
- We are unable to accept payment by cheque less than 21 days prior to departure. This is to allow for time to process the payment.
- Seating arrangements for parties of four or more. Seating is limited on many of our special events due to their popularity. We will always do our best to make sure you and your party sit together; unfortunately this can't always be guaranteed.

DISABLED ACCESS

- Heritage railway stations and train carriages were designed and built many decades ago. We are sorry that it may not be possible for some passengers with mobility issues to use our Dining Car services; however, we will assist in every way possible to accommodate everyone. It is helpful if you inform us of any special requirements in advance of your visit. Please call us to chat about what options there may be if you have any concerns. Tel. 01624 697457

TRAVELLING DOGS AND OTHER PETS.

- We welcome guide and assistance dogs on our Dining Car services. Please advise us at the time of booking if you require this so we can select the most appropriate seating
- We do not allow non-assistance dogs or other pets on our Dining Car carriages.

Our full terms of booking can be viewed at www.rail.im or on request at Douglas Railway Station.

DATES FOR THE DIARY

2025 SEASON

ISLE OF MAN STEAM RAILWAY

THURSDAY 20TH MARCH TO SUNDAY 2ND NOVEMBER

THE MANX ELECTRIC RAILWAY

TUESDAY 18TH MARCH TO SUNDAY 2ND NOVEMBER

SNAEFELL MOUNTAIN RAILWAY

SATURDAY 29TH MARCH TO SUNDAY 2ND NOVEMBER

DOUGLAS BAY HORSE TRAMWAY

THURSDAY 3RD APRIL TO SUNDAY 2ND NOVEMBER

MANX HERITAGE TRANSPORT FESTIVAL

TUESDAY 22ND JULY TO SUNDAY 27TH JULY

HOP-TU-NAA EXPRESS

SATURDAY 1ST NOVEMBER

DINO EXPRESS STEAM ADVENTURE TO MNH RUSHEN ABBEY



FRIDAY 11TH APRIL TO SUNDAY 13TH APRIL 2025

manxnationalheritage.im



Have roarsome fun on the Dino Express 2025. Don't miss out on this amazing Jurassic adventure with Isle of Man Railways in collaboration with Manx National Heritage and The Steam Packet Company. It's a great, entertaining and educational experience to share with family and friends for all ages. Book today at www.rail.im



★★★★

THE EMPRESS HOTEL

CENTRAL PROMENADE • DOUGLAS

- ◆ Refurbished Bedrooms including Penthouse, Seaview & Family Rooms
- ◆ Piano Bar, Lounge & Conservatory
Bar meals served 11-9.30pm daily
- ◆ Brasserie Restaurant
Open 6-9.30pm daily & Sunday Lunch
- ◆ Deluxe Afternoon Tea
Served 1-4pm daily. Pre-booking req.
- ◆ Weddings & Events



CALL 01624 661155 OR MORE DETAILS AT
WWW.THEEMPRESSHOTEL.NET

AND THERE'S MORE...

After exploring the Steam Railway why not share in the unique bygone age of our other heritage railways by taking the Douglas Bay Horse Tramway along Douglas promenade from the Villa Marina to Derby Castle. Then step onto one of our beautifully restored Manx Electric Railway trams from Derby Castle to Laxey with a scenic coastal adventure as far as Ramsey in the North.

Reach for the Seven Kingdoms of Mann on the way back by taking the Snaefell Mountain Railway from Laxey Station to the panoramic mountain top of Snaefell. This viewing point is breathtaking with the addition of enjoying delicious homemade cakes or a meal served at the highest cafe and restaurant on the Isle of Man. There is no island quite like this jewel in the Irish Sea with such historic diversity and heritage.

For our full 2025 Railway Timetables go to: **www.rail.im**



PRIVATE HIRE

Isle of Man Transport provide unique experiences for private hire and corporate hospitality events. We can tailor any package to suit your requirements and include catering arrangements.



SHOP WITH THE ISLE OF MAN RAILWAYS

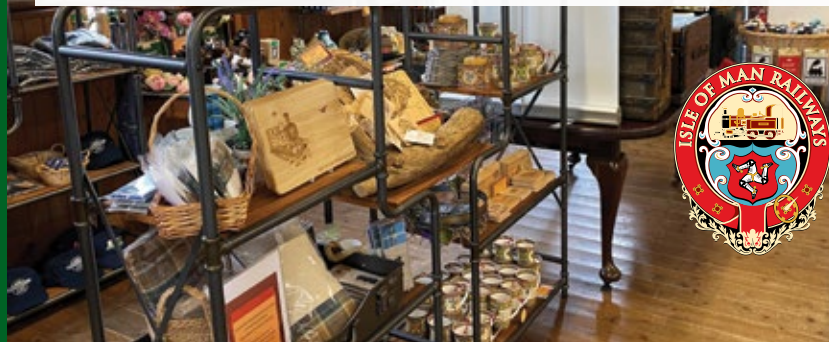
Enjoy a bit of retail therapy with gifts galore for all the family in the Isle of Man Railways shops. Port Erin shop with an educational heritage museum and Diesel Simulator Machine is great entertainment for any age with certificates to be won!

At Douglas Railway Station in The Tickethall you'll find more heritage railway treats to purchase and lots of interactive toys for kids while enjoying some delicious lunch and afternoon tea treats in our cafe.

MER Derby Castle has a bespoke shop with soft tram horse toys and other keepsake memorabilia.

Ramsey MER Station this year will provide a little shop for our visitors and local travellers. We also have a growing online store at <https://www.iombusandrail.im/heritage/shop/>

So take a look, pop on down and buy something different while exploring our four stunning heritage railways.



THE TICKETHALL RESTAURANT & CAFE

Situated in the heart of Douglas, The Tickethall Restaurant and Cafe is the go-to venue for light bites, hearty meals, evening dining, or a tasty coffee and cake. Plenty of choice, friendly service, and conveniently located, it's no wonder The Tickethall is such a favourite.

Our breakfast, lunch, and evening menus feature tasty treats to suit every member of the family. With a central Douglas location, plenty of parking, full accessibility, and service with a smile, The Tickethall is perfect for all.

Our experienced chefs use quality local ingredients from Isle of Man suppliers to prepare fresh, delicious dishes for you to enjoy in the historic surroundings of Douglas Railway Station, with tasty treats to suit every diner.

For more information go to our Facebook page at:

<https://m.facebook.com/tickethalliom/>

For Booking Enquiries got to <https://tickethall.im/reservations/>



Contact us on

01624 627888

tickethallenquiries@gmail.com





THE DINING CAR

EST. 2013

How to book - Contact

01624 697457

steamdining@gov.im

Advance booking essential.

Your ticket includes return train travel and meal.

You must board the Dining Car
20 minutes prior to departure.

Menu choices required at time of booking.

SEE PAGE 22 & 23 FOR DOWN THE LINE 2025

Please advise of any dietary requirements at time of booking.
For some multiple courses not all dietary requirements can be catered for. Brochure images are for illustrative purposes only.

[f/loMTransport](https://www.facebook.com/loMTransport) [f/The-Tickethall](https://www.facebook.com/The-Tickethall)

www.rail.im



Th.
tickethall
restaurant & cafe

Images may be taken of our events and may be used on Isle of Man Transport social media pages, website & print materials. Please let the photographer or a member of staff know if you do not wish to have your photo taken.