

Access Guide to Spooyt Vane & Cabbal Pheric

Manx National Heritage has the guardianship of many ancient monuments in the landscape. A number of these sites are publicly accessible. Please note in most circumstances the land is not in the ownership of Manx National Heritage and visits are made at your own risk.

We recognise that visiting the Island's ancient monuments in the countryside can present difficulties for people with disabilities. We have prepared an access guide for visiting Spooyt Vane to help you plan your visit. This access guide does not contain personal opinions as to suitability for those with access needs, but aims to accurately describe the environment at the site.

Introduction:

- Ancient keeill (church)
- Waterfall
- Both within Glen Mooar

Cabbal Pheric means 'St. Patrick's Chapel'. The keeill is believed to date from at least the 12th century. Little remains now, but it once had flag stone floors, a large altar and a window. It is surrounded by low earth bank and a further building may once have been the priest's house. The nearby 'Monk's Road' would once have been a packhorse road.

Spooyt Vane Waterfall could explain why the keeill was built in this site as it may have had prehistorical religious significance.

It is a publicly accessible site.

Getting to Spooyt Vane and Cabbal Pheric:

GRID REFERENCE - SC 3077 8879

Spooyt Vane and Cabbal Pheric are found in the North West of the Island just outside Kirk Michael. Both are situated near the top of Glen Mooar.

By Car:

From Douglas – Follow the signposts for Peel (A1). Continue for approximately 9km until you reach the traffic lights at Ballacraigne, then turn right. Follow the (A3) towards Kirk Michael, turning sharp left opposite Kirk Michael School onto the Peel (A4) Road. Pass Glen Whyllin campsite and after 1.5km turn left on to Bayr Balleyleigh Road, signed Bayr Garroo (C4). After 0.5 km, bear right and stop at the parking area.

Follow the track at the south end of the car park, cross the stream and immediately on the right take the gated footpath, signed 'no pony trekking'. This is the entrance to Glen Mooar. The path forks; take the left-hand path to Cabbal Pheric and the right-hand path for Spooyt Vane.

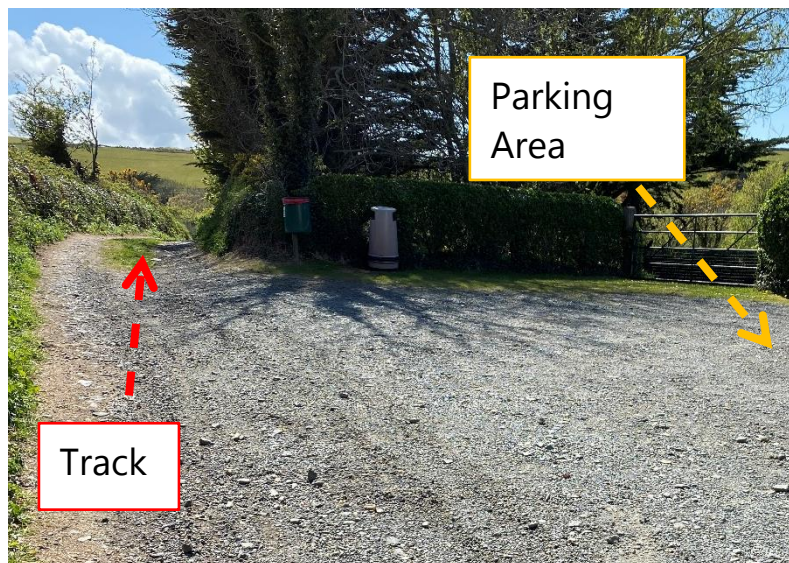
There is no bus route close to this site.



Bear right here off the Ballyleigh Road

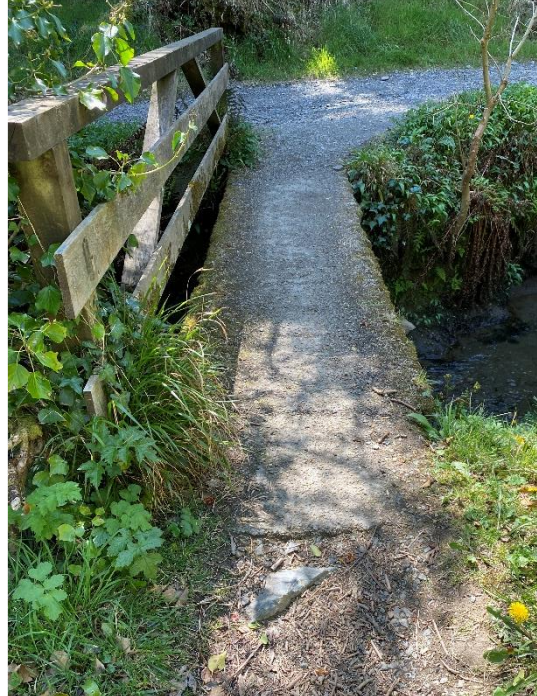
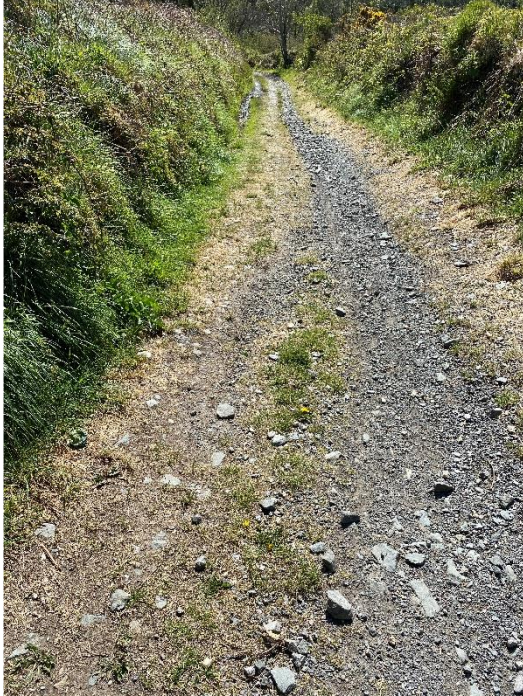


Bear right again at Ballanea Farm



Continue to the parking space on the right and then follow the track at the south end of the car park

Access for Visitors:



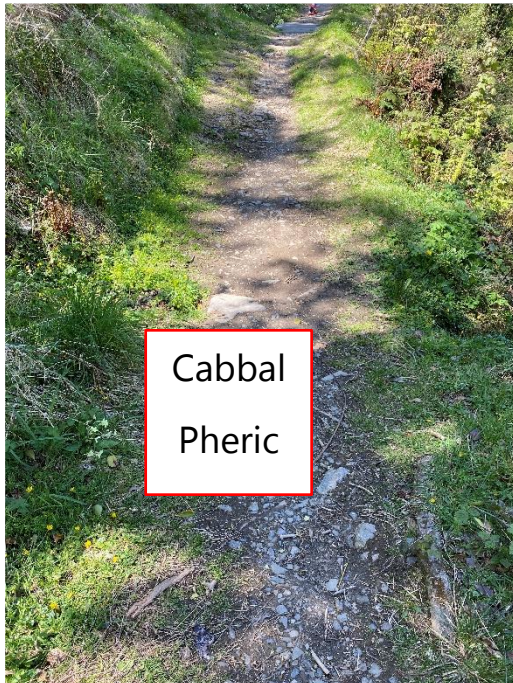
The track is stony, uneven and slopes in places. It leads to a narrow footbridge across the stream. There is a handrail on one side only.



This gate is on the right and leads into Glen Moar



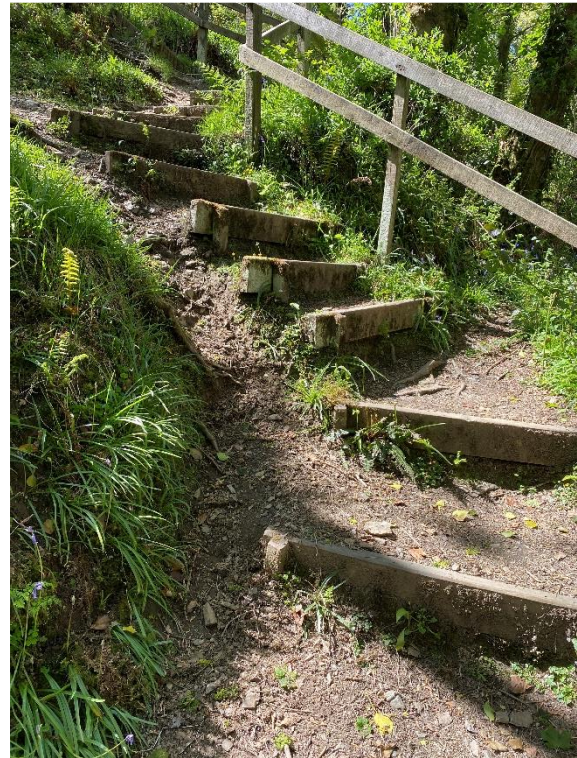
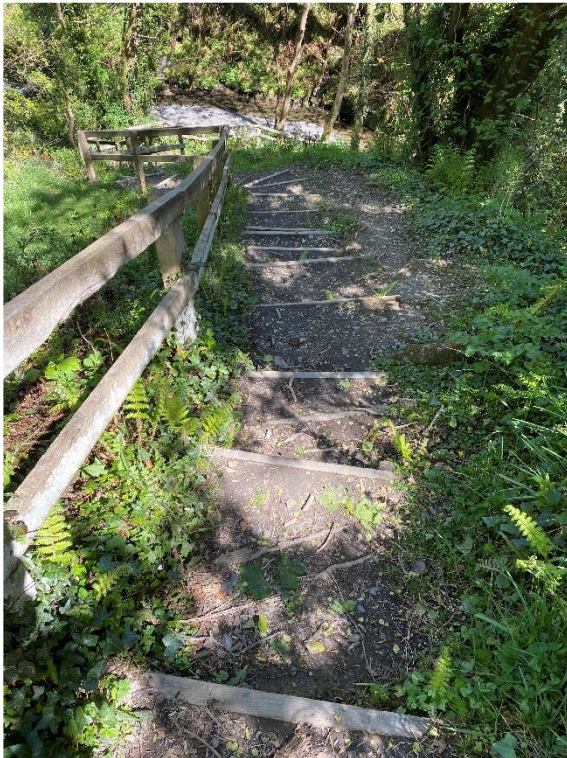
The pathway forks – follow the left path for Cabbal Pheric and the right path for Spooyt Vane waterfall



The path to Cabbal Pheric is stony and uneven places and could be slippery. There is a plank bridge over a small stream



The keeill site is grassy and uneven with protruding rocks in places. It could be slippery



The steps to the waterfall are long, very steep and uneven. There is a handrail on one side of the steps.

Further Information:

Please observe the Isle of Man Country Code when visiting ancient monuments in the landscape. This is to protect yourselves, the wildlife, farm animals, and to preserve the natural beauty of the Manx countryside.

Please remember that you are responsible for your own safety and for others in your care, so dress appropriately, wear stout footwear, be prepared for changes in weather and other events. We recommend letting someone else know where you are going and when you expect to return. Remember to bring your mobile phone with you, but don't assume you will always get reception at some of the more remote sites.

If you would like to speak to a member of our team about visiting the Spooyt Vane or other ancient monument sites please email: enquiries@mnh.im.

For more detailed information about the site please see 'A Guide to the Archaeological Sites of the Isle of Man up to 1500AD' by Andrew Johnson and Allison Fox (Culture Vannin, 2017), available to purchase from the Manx Museum Gallery Shop and online:

www.manxnationalheritage.im