

## Access Statement – Creggan – Self Catering



Creggan is a dormer bungalow with stunning views of the coast across to Ramsey from Port E Vullen bay and across the valley up to North Barrule. North Barrule is the 2<sup>nd</sup> highest peak on the Isle of Man sitting at 1,854 feet.

It is reached up a long drive from the road and set in mature grounds both to the front and rear of the house. It sleeps 7 adults or 6 adults and 2 children with one double bedroom and ensuite downstairs and 3 further double bedrooms upstairs. It has 3 bathrooms (2 ensuite) and a separate downstairs toilet. There is a large kitchen diner which overlooks the bay, a utility room, dining room and large open plan L-shaped lounge with views both of the coast and countryside. The dining room has double patio doors that open onto a large patio area.

Well-behaved dogs are welcome.

### **Contact information:**

The house is managed by local Isle of Man holiday cottage company Island Escapes.

You can find further details on their website [www.islandescapes.im](http://www.islandescapes.im).

Contact details are:

Phone - 01624 830200

Email - [visit@islandescapes.im](mailto:visit@islandescapes.im)

### **Where we are:**

Port E Vullen is just outside of Ramsey on the northeast coast of the Isle of Man. It has 2 beaches – Port E Vullen beach which the house overlooks and Port Lewaigue beach further up the coast. The house sits alongside the Manx coastal footpath, which can be accessed via a gate from the driveway, this takes you onto Maughold headland.



### **Directions:**

Creggan can be found on the A15 just up the hill from Port E Vullen village centre, driving towards Maughold church.

**PLEASE NOTE - the post code does not take you to the property when using satnav.**

It is best to input Port E Vullen then when entering the village carry on up the hill and Creggan is the second house on the left after the national speed limit sign. 🚫  
The house name is on a sign by the road.

Google maps link -

[Market PI, Ramsey, Isle of Man IM8 1JT, Isle of Man to A15, Isle of Man - Google Maps](#)

**Directions from Ramsey** – take the A2 towards Laxey. Cross the train lines coming out of Ramsey and take the next left A15 to Port E Vullen and Maughold.



Drive over the train lines (past Port Lewaigue station) into the village carry on up the hill and Creggan is the second house on the left after the national speed limit sign.

**Directions from Douglas** – You can travel to Ramsey and up to Port E Vullen over the mountain road (A18) or along the coastal route (A2). If taking the coastal route drive through Glen Mona then after 2 tight corners you will see the sign for A15 to Port E Vullen and Maughold – it's a sharp right just after a white house on your right hand side

Drive over the train lines (past Port Lewaigue station) into the village carry on up the hill and Creggan is the second house on the left after the national speed limit sign.

## Public Transport Routes

Information on bus and train services can be found on [www.iombusandrail.im/](http://www.iombusandrail.im/)  
You can search all routes at [www.traveline.info](http://www.traveline.info)

There are lots of buses that run from Ramsey to other areas on the island. It is about a 50 minute walk from Ramsey to Creggan. There are local taxi services and also an excellent service called Connect Villages that runs an on-demand door to door bus service to the area. You can also use a local train station from March to October.

### Buses

**Douglas to Ramsey** – 3, 3A, 3B, N3, X3

Taxis are available from outside the ferry terminal

**Ronaldsway Airport to Douglas** (you can then change in Douglas for Ramsey) – 1, 2, 11

Taxis are available from outside the airport

### Connect Villages door to door bus service

[www.iombusandrail.im/minibuses/connectvillages/](http://www.iombusandrail.im/minibuses/connectvillages/)

ConnectVILLAGES is an on-demand bus service with no fixed timetable. It responds to requests and collects multiple passengers all heading in the same direction.

Booking can be made using the MANNgo app or by calling 697440 between 8.30am and 4.30pm Monday to Friday.

### Ramsey Taxis -

A.A.Airport - 07624 406802

Ayres Taxis - 01624 818118

Lezayre Cabs Taxi Service - 07624 429111

Ramsey Radio Taxis Ltd - 01624 818181, 01624 814141, 01624 818294

Manx Taxis - 01624 817788

**Train stations** – Manx electric railway runs between Douglas and Ramsey from March to October. There are 2 train stations about 20 minutes walk from Creggan – Belle Vue and Lewaigue station – you can find more information and other railways services on the island at - [www.iombusandrail.im/heritage/our-railways/manx-electric-railway/](http://www.iombusandrail.im/heritage/our-railways/manx-electric-railway/)

## Parking and outside the property

There is a drive up to the property and space outside for parking with room for multiple cars. The drive is sloped and paved, accessible for wheelchairs.



All areas of the garden are wheelchair accessible via paths. Please note that both gardens are sloped.

Facing the property there is a sloped grass area to the left which runs up to the headland. Level access continues from the drive along a paved path round the side to a small sheltered patio area at the back of the property and a larger patio area on the right. This continues via steps and a sloped area to the side to a lower level garden which runs down to the road. There are also steps from the drive to this patio area.





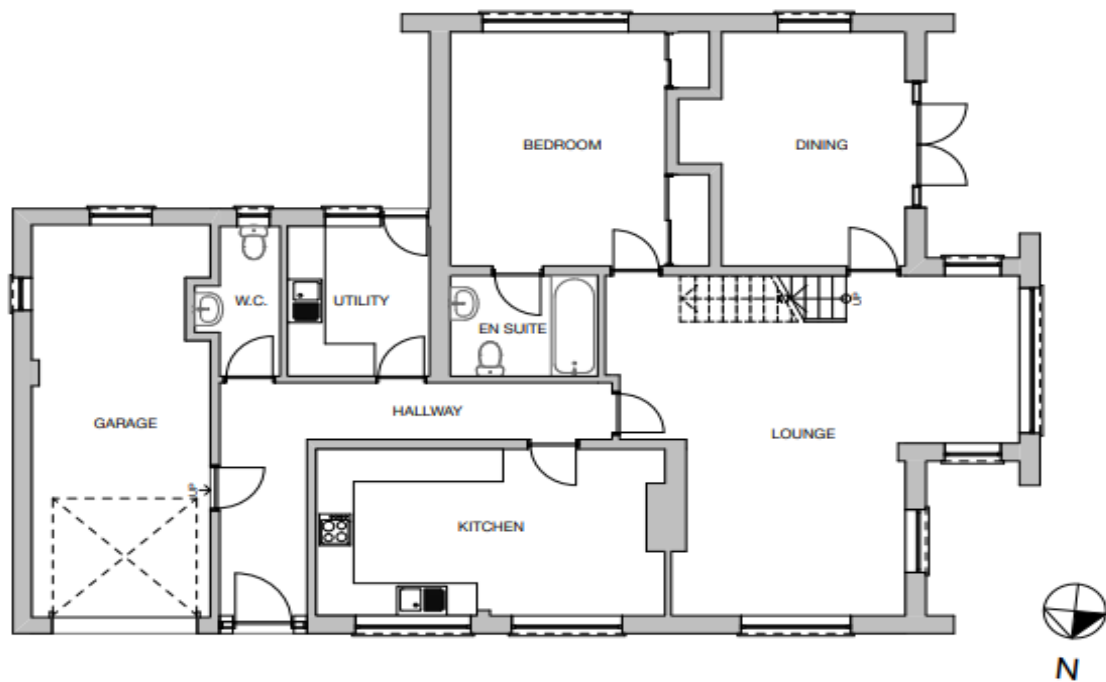
## Entering the property

There are 2 shallow steps into the property.

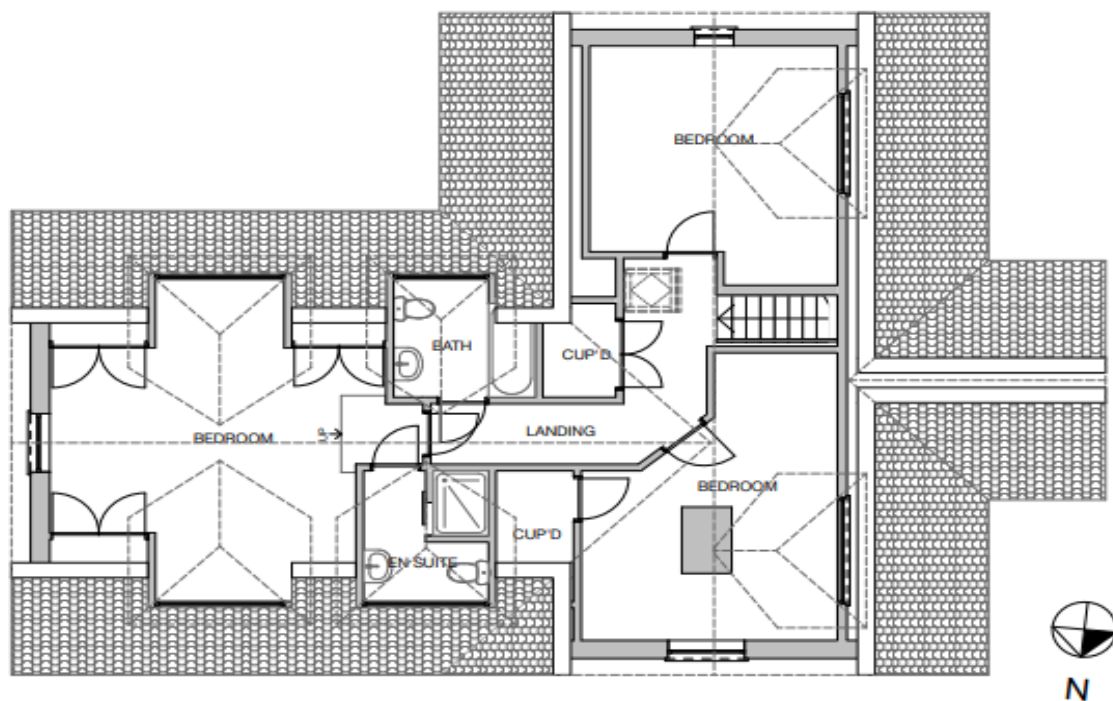
The front door and all internal doors are push handles, there are 2 external lights at the front, one on a sensor and the other can be switched on when entering the property.

The house is a dormer bungalow, the layout is shown below.

## Ground floor



## First floor



There is one bedroom on the ground floor with ensuite bath/shower room and a downstairs toilet. We have use of a swivel bath chair on request to access the shower.



Tables are provided in the kitchen and dining room, there is sufficient space for wheelchair users to access comfortably. All furniture can be moved if required

There are 3 outside doors:

1. Front door – dimensions (cm): Step 1 – height – 8, width – 86, depth – 73; Step 2 – height – 14, width – 86.
2. Utility room door – dimensions (cm): 1 step - height – 14, depth – 46)
3. Dining room double patio doors at the back of the house: – dimensions (cm) 1 step – height – 20, depth – 6. These lead to an outside patio area that is paved and suitable for wheelchairs.

Upstairs – there are 13 steps that lead to the first floor (dimension (cm) height – 8, depth – 23, width – 77). There are 3 bedrooms on the 1<sup>st</sup> floor and 2 bathrooms. The largest bedroom is found at the back of the house and is accessible down one step. It has an ensuite bathroom with walk in shower. The ensuite is before the step down into the bedroom and the shower is level access, recessed slightly into the floor.



## Shopping

There are 2 supermarkets in Ramsey (5 min drive) Co op and Shroprite and several larger supermarkets in Douglas (30 min drive). Tesco and Coop both offer online delivery should you wish to organise in advance.

Please contact Island Escapes to discuss any requests or requirements that they may be able to assist with and they will endeavour to accommodate.