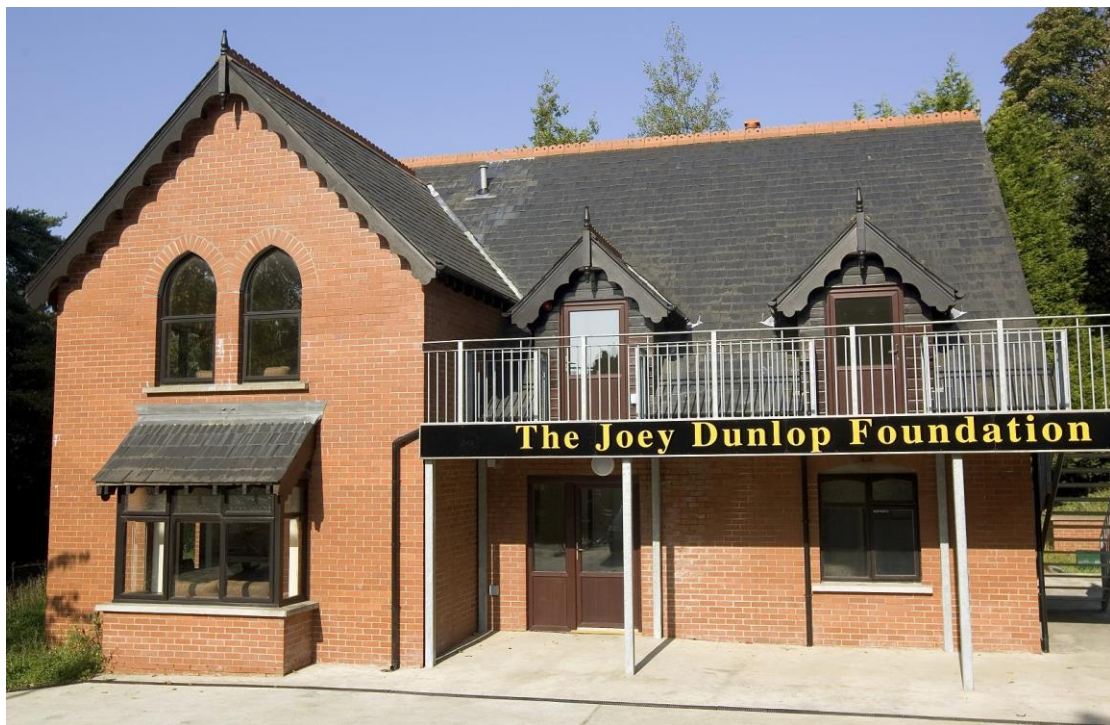




Joey Dunlop Foundation Access Statement

Self-catering holiday apartments for those that require specialist, level access accommodation



Braddan Bridge House, Peel Road, Braddan, Isle of Man, IM4 4TN

Tel: 01624 677741

Email: info@joeydunlopfoundation.com

Website: www.joeydunlopfoundation.com

Updated Jan 2017

Welcome

Joey Dunlop Foundation is an Isle of Man Registered Charity (Registration Number 842) and was established in 2001. The charity is run by a small but very dedicated committee who also pride themselves by honouring the late motorcycle legend, Joey Dunlop OBE. The Charity's aim is to provide specialist holiday accommodation to anyone wishing to visit the Isle of Man.

Our facilities have been awarded the Independent Wheelchair Users logo from the National Accessible Scheme (NAS) and described as exceptional. The facility is located on the A1 heading West out of Douglas at Braddan Bridge, just off the famous TT course. A visual link from the ferry terminal to JDF can be found on the JDF website

<http://www.joeydunlopfoundation.com/gettinghere.html>

The complex has recently been extended with two extra apartments; now offering five self-catering apartments, four of which have two twin-bedded rooms (sleeps 4) and one single twin-bedded room (sleeps 2). Two double apartments are then interlinked to by an internal doorway for larger families.

There is a steep driveway up from the TT access road which leads to a large car park area located at the front of the facility. The car park has a concrete surface with level access into the guest rooms.

The main point of contact for JDF is Kevin Quirk who can be reached on 01624 677741 or email info@joeydunlopfoundation.com

Pre-arrival, key collection and welcome

- There is further information available on the JDF website at www.joeydunlopfoundation.com which also shows details of the facilities including the kitchen/living areas, bedrooms and wet rooms
- Assistance dogs are welcomed but please advise this when making a booking
- We do not have a permanent on site manager but the office is usually manned in the mornings Monday to Friday 9am to 2pm
- A meet & greet service is available and will probably assist first time guests, otherwise keys can be collected by prior arrangement from a key safe facility located on site. Particularly if you may be arriving in the early morning (ferry travel) it is advisable to confirm arrangements before travel
- All apartments have a Welcome Pack providing extra information
- Nobles hospital is only a short distance from the complex and is clearly sign-posted

Facilities available

- All apartments have level access **although some outer doors have a storm guard lip of 2cm to overcome. Please let us know at the time of booking if this may present a problem so that an alternative apartment can be offered**
- The two apartments situated on the first floor are accessed by a platform lift which is fitted with automatic doors. It is important that the doors are not obstructed or held open. An external balcony also provides access and will also provide level access on to an external pavement in case of fire emergency or in the event of a lift breakdown
- There is also external stair access from the balcony and evac chairs are available for use in case of emergency, to avoid accidents, these should only be used by competent persons
- Doorways at the complex are mainly 77cms width at the narrowest point. Floors consist of hard surfaces in most areas, the entrance foyer has a short pile carpet
- Each apartment has one bedroom with a height adjustable single bed and memory foam, easy clean mattress. Should you require further information or extra adaptable beds please ask when making your booking
- There is good colour contrast between floor and walls throughout with ample handrails in all wet rooms
- There are two mobile hoists available, (Oxford Advance Hoist and an Oxford Midi 170 hoist) as well as an air-mattress. If these are required, please advise us when making a booking.
- A communal laundry facility is available for use in external separate building with level access. Washing, drying and ironing equipment is available, shared with other guests. Extra bed linen and towels are available if required
- Wi-Fi is available with some apartments having data ports installed and there is a landline phone for emergency use only in the entrance foyer
- Freeview Sky TV is available in each living area with a coffee table at a height of 46cms. Small fold out tables with fold out chairs are also available. Table height is 74cms
- There is an electric reclining chair in each apartment along with a sofa-bed couch
- Two apartments are fitted with Geberit automatic toilets. If these are required, please request at time of booking. All toilets have a seat height of 50cms. There is also a wheelchair commode available which should be reserved at time of booking
- Lever taps are fitted to all sinks
- Kitchen worktop surfaces are at a height of 84cms and sinks are height adjustable. Cupboards have easy to use drop down facilities to enable easy reach. Hobs are electric and oven door are side opening.

- Wardrobe rail height is 135cms
- Toiletries and consumables are not provided
- Easy to use gas boilers are fitted to each apartment with rooms temperatures controlled by individual radiator thermostats

JDF aims to provide the best possible disabled accessible holiday accommodation and always welcomes feedback. We hope that you have a wonderful experience staying at Braddan Bridge House and that having enjoyed your stay you will stay with again.

If you should have any further queries, please do not hesitate to contact us.

Tel: 01624 677741

Email: info@joeydunlopfoundation.com

Website: www.joeydunlopfoundation.com

January 2017