

## Access Statement & Accessibility Guide for The Rowans, Kirk Michael



### Welcome

At The Rowans we want to make everyone's stay as enjoyable as possible. We aim to accurately describe our facilities and services to give you the confidence that we offer the right facilities to cater for your specific requirements and we strive to support as many the individual needs of our guests as possible.

## At a Glance

### Level Access

- There is no level access to the property.

### Access with steps

- There is a small step and one further step to gain access through main entrance to:
  - The inner hall.
- There is level access from the inner hall to:
  - Bedroom: Double bedroom (with cot and cot-bed),
  - Bedroom: Double Bedroom,
  - Kitchen,
  - Lounge,
  - Downstairs shower room with WC.

### Bedrooms

- We have non-allergic bedding.

### Level access bedrooms

- The route to the bedroom is 750mm wide, or more.
- The bedroom door is 750mm wide, or more.
- There is unobstructed floor space 1200mm by 900mm, or more.
- The bathroom has a level access shower

### Hearing

- We have no additional facilities for those with a hearing impairment

### Visual

- We have no additional facilities for those with a visual impairment

### General

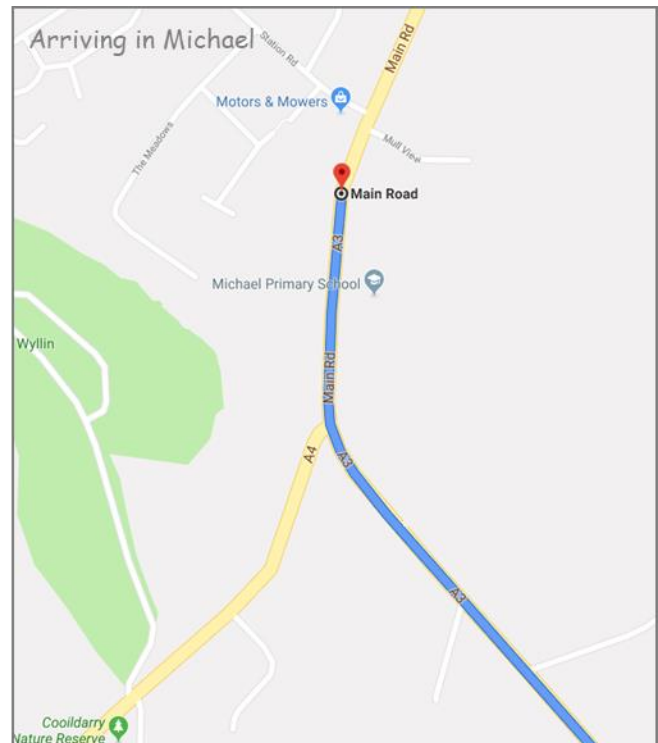
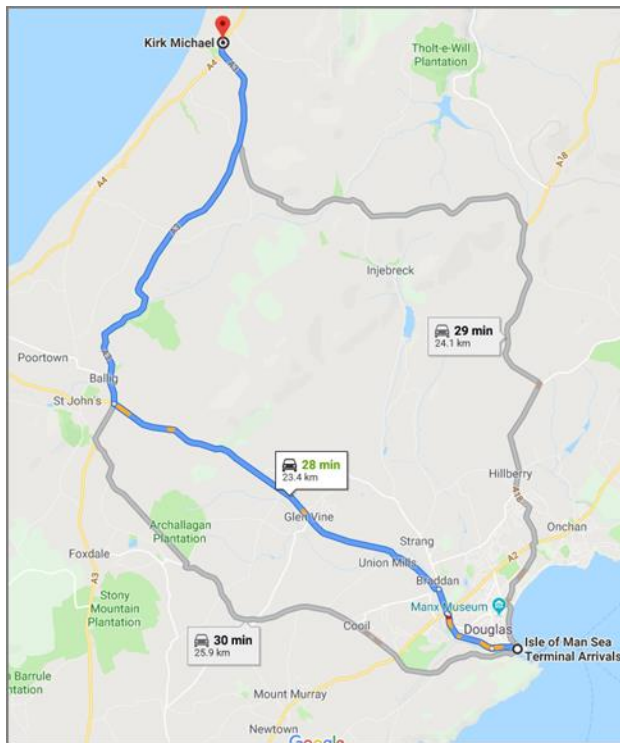
We would recommend the property as suitable for:

- Older and less mobile guests
- Part-time wheelchair users
- Assisted wheelchair users



## Getting here

The Rowans  
Main Road  
Kirk Michael  
Isle of Man  
IM6 1AH



### Travel by public transport

- You can get to The Rowans by bus from Central Douglas using the 5, 5A, 5C, 6A or 6C
- The nearest bus stop is in Kirk Michael. The bus stop is 200 yds from The Rowans.

### Travel by taxi

- You can get a taxi with Telecabs 2002 by calling 01624 629191. The taxi company has a wheelchair accessible vehicle.

## Parking

- At the front of The Rowans is a large tarmac area for car parking which can cater for 5+ vehicles which one vehicle being able to park within a meter of the front door.
- There is a garage for 1 vehicle or multiple motorcycles.
- The dedicated tarmac driveway has ample room for unloading and maneuvering.



Driveway at the front of The Rowans

## Arrival

### Driveway to main entrance

- From the street to the main entrance, there is level access.
- The path is 1080mm wide, or more.
- The path is sloped.

### Main entrance

- The main entrance has stepped access.
- The door is 900mm wide.
- The main door is side hung and manual.

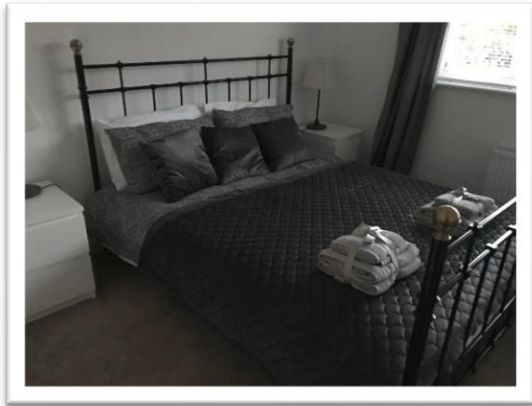


Front access from Driveway

## Getting around inside

### Bedrooms

- All bedrooms have windows.
- Bedrooms have ceiling lights, bedside lamps and natural daylight.
- All bedrooms are non-smoking.
- We have non-allergic bedding.
- We can move the bedroom furniture, to improve accessibility.



Double bedroom

### Kitchen/Diner

- We have an open plan kitchen/diner.
- From the inner hall to the kitchen, there is level access.
- The route is 820mm wide, or more.
- The door is 820mm wide.
- The hob is available at a height of 900mm.
- The sink is available at a height of 900mm.
- The oven is available at a height of 900mm.

## Lounge

### Lounge

- From the inner hall to the lounge, there is level access. The route is 820mm wide, or more. The door is 820mm wide.
- There are two sofas, seat 450mm from floor and two armchairs, seat 460mm from floor.



Lounge

## Getting around outside

### Garden

- From the main entrance to the gardens, there is level access

### Lawn Area

- From the main entrance to the gardens, there is level access.

### Decking Area

- From the main entrance to this area, there is level access.
- To access the decked area there is one step.