

CLASSIC
FAVOURITES

THEME
STEAM

FAMILY
EVENTS

COMPUTER
CLUB

EXCLUSIVE
DINING

THE DINING CAR

EST. 2013

CELEBRATING 10 YEARS

2013 to 2023

Find out what's cooking on The Dining Car

APRIL TO OCTOBER 2023



Isle of Man
TRANSPORT



Further details at
www.rail.im

THE DINING CAR

EST. 2013

It's full steam ahead for great gastronomical experiences with Isle of Man Railways during 2023. Built in 1905 and restored in 2013, the plush Dining Car is celebrating 10 years in service. One of only a handful of fine dining narrow gauge dining cars in the world. The sumptuous surroundings of its saloon carriages hark back to the Pullman-style fine dining of yesteryear although there is nothing old fashioned about the fabulous food served on board.

Mouth-watering menus offer the best of seasonal home grown produce teamed with carefully chosen wines, beers or soft drinks from the bar car. Choose from Classic Favourites, Theme Steam and our exclusive dining experience or try one of the family events and lunches.

You can also book the Dining Car for wedding parties, corporate and other private hire events, which can be tailored to individual requirements.

Please advise of any dietary requirements at time of booking. For some multiple courses not all requests can be catered for and menus may vary according to seasonal fare availability.

Images are for illustrative purposes only.

Memories you will treasure...

CLASSIC FAVOURITES Page 3-6

Curry Club | Pie and Mash | Silver Dream Lunch | Tex Mex
Oriental Express | The Italian Job | Biker's TT Special Pie and Mash

THEME STEAM Page 6-9

Murder Down the Line | Tapas of Seville | Gin & Sin Fynoderee Special
French Gourmet Night | Hop-tu-Naa Murder Mystery

THEME STEAM - STATION LEGENDS Page 10-11

A8BA 'Dancing Queen' | Eurovisions Greatest Hits Naughty 90s
Fleetwood Mac 'Dreams' | Queen 'Radio Ga Ga' | Love Train Greatest Romantic Hits

DOWN THE LINE Page 12-13

FAMILY EVENTS Page 14-17

Easter Sunday Lunch & Afternoon Tea | Manxman Sunday Lunch
Father's Day Sunday Lunch & Afternoon Tea | Back to School Afternoon Tea
Hop-tu-Naa Dragon Express

TT COMMUTER CLUB Page 18

EXCLUSIVE DINING Page 19-22

Platform Lunch Club | 150th Anniversary Duke of Sutherland Morning Brunch
150th Anniversary G.H.Wood Gala Evening | 150th Anniversary Family Afternoon Tea

SAMPLE MENUS Page 23-26

TO BOOK

☎ 01624 697457
E: steamdining@gov.im

- Advance booking essential.
- Your ticket includes return train travel and meal.
- You must board the Dining Car 20 minutes prior to departure.
- Menu choices required at time of booking.

FULL TERMS
AND
CONDITIONS
ON PAGE 27

CURRY CLUB

A taste of spicy rich authentic flavours on the Curry Club train with accompanying sides and a delicious dessert selection to enjoy on your return journey.

£39^{PP}

Price includes
two courses and
return travel
to Castletown



All Friday evening trains
Departs Douglas 19:00 | Returns by 22:30

JUN	JUL	AUG	SEP	OCT
16	14	11	8	27

PIE AND MASH

The Station Masters hearty homemade pie with delicious fillings on the steam railway. A selection of classic desserts will be offered on your return journey. Fully stocked bar on board.

£39^{PP}

Price includes
two courses and
return travel
to Port Erin



The Pie and Mash train is available on the following Thursdays throughout the season
Departs Douglas 19:00 | Returns by 22:30
Additional Bikers TT Special Pie and Mash trains on
Thursday 1 June and Saturday 10 June

APR	MAY	JUN	JUL
6, 13, 27	11, 25	15, 22, 29	6, 13, 20, 27

AUG	SEP	OCT
3, 10, 17, 24, 31	14, 28	12, 26

SILVER DREAM LUNCH

Take time out for a relaxing two course lunch, including a main course and dessert. All served as you enjoy a steam adventure on the Dining Car train.

£33 OVER 60s | **£36** UNDER 60s

Price includes food and return travel to Castletown

Departs Douglas 12:10 | Returns by 14:40



APR	MAY	JUN
13	11	15
JUL	AUG	SEP
13	17	14

TEX MEX

Its Fajitas Friday. Our American and Mexican cuisines create bold Tex-Mex flavours. Whether you enjoy buritos, nachos or enchiladas there will be something for everyone to share in.

£39^{PP}

Price includes two courses and return travel to Castletown



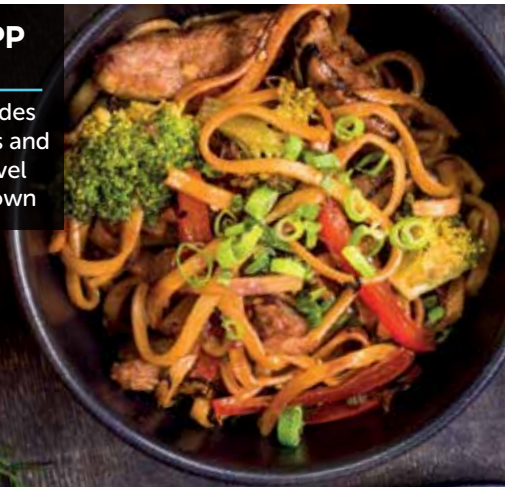
All Friday evening trains Departs Douglas 19:00 Returns by 22:30		
APR	JUN	JUL
21	23	21
AUG		SEP
18		22

ORIENTAL EXPRESS

Exotic mix of authentic spices combined with sweet and sour complements the rice dishes. A choice of fine Southeast Asian desserts round off your dining experience.

£39^{PP}

Price includes
two courses and
return travel
to Castletown



All Friday evening trains
Departs Douglas 19:00 | Returns by 22:30

MAY	JUN	JUL
5	30	28

AUG	OCT
25	6

THE ITALIAN JOB

Transport yourself to Italy on board the Dining Car. Indulge in two courses of traditional Italian cuisine as we steam through the glorious Isle of Man countryside to Castletown.

£39^{PP}

Price includes
food and
return travel
to Castletown



All Friday evening trains
Departs Douglas 19:00 | Returns by 22:30

MAY	JUL	AUG
19	7	4

SEP	OCT
1	20

BIKER'S TT SPECIAL PIE AND MASH

THURSDAY 1 JUNE

SATURDAY 10 JUNE

Enjoy a hearty pit stop from the roar of the bikes. Sit down to a homemade pie filled with flavoursome ingredients on the steam railway. A selection of TT classic desserts will be offered on your return journey. Fully stocked bar on board.

£39^{PP}

Departs Douglas 19:00
Returns by 22:30

Price includes two courses and return travel to Port Erin



MURDER DOWN THE LINE

SATURDAY 22 APR

Try and solve the crime scene all the way down the line on our murder mystery dining experience. Between three courses can you be the detective and workout who's to blame as clue by clue the drama unfolds?

£52^{PP}

Departs Douglas 19:00
Returns by 22:30

Price includes three courses and return travel to Castletown



TAPAS OF SEVILLE

SATURDAY 20 MAY

SATURDAY 19 AUG

A vibrant fiesta evening with mouth-watering Spanish tapas sharing plates. Bring a friend, the whole family or just spoil yourself and your partner to a memorable evening of tapas delights!

£49^{PP}

Departs Douglas 19:00
Returns by 22:30

Price includes three courses and return travel to Castletown



GIN & SIN FYNODEREE SPECIAL

SATURDAY 5 AUG

SATURDAY 2 SEP

Three courses of mouth-watering gin accompaniments have been created by the dining car chefs to ensure a Fynoderee match made in heaven. Fully stocked bar on board.

£49^{PP}

Departs Douglas 19:00
Returns by 22:30

Price includes three courses and return travel to Castletown



FRENCH GOURMET NIGHT

SATURDAY 30 SEP

French home-style cooking awaits you as you travel through stunning Manx countryside aboard the train. In a relaxed atmosphere our diners will enjoy three courses of traditional Parisian cuisine and tempting desserts on their return journey.

£49^{PP}

Departs Douglas 19:00
Returns by 22:30

Price includes three courses and return travel to Castletown



HOP-TU-NAA MURDER MYSTERY

SATURDAY 28 OCT

During the wizarding hour a murder has been committed aboard the spooky train. Between three Hop-tu-Naa courses can you solve the ghostly web of trick or treat clues and who is in the shadows waiting to ensnare their next victim....

£52^{PP}

Departs Douglas 19:00
Returns by 22:30

Price includes three courses and return travel to Castletown



STATION LEGENDS

IN ASSOCIATION WITH MANX RADIO



£49^{PP}

Price includes three courses and return travel to Castletown

Departs Douglas 19:00

Returns by 22:30

ABBA 'DANCING QUEEN'

SATURDAY 8 APR

Winner takes it all with a Gimme! Gimme! Gimme! Fabulous three course Mamma Mia dining experience. Live DJ mixes will add to your Super Trouper night aboard the dining car.

EUROVISION GREATEST HITS

SATURDAY 6 MAY

To celebrate the Eurovision coming to Liverpool we are sharing the winning groups greatest hits! So don't be a puppet on a string, make your mind up and be part of a great three course dining car party night with Manx Radio.

NAUGHTY 90s

SATURDAY 15 JUL

90's Classic Pop, Hip-hop and Dance. Be in Vogue and have a wonderwall three course dining experience with friends and family as you travel through Isle of Man's picturesque countryside.



STATION LEGENDS

IN ASSOCIATION WITH MANX RADIO



£49^{PP}

Price includes three courses and return travel to Castletown

Departs Douglas 19:00

Returns by 22:30

FLEETWOOD MAC 'DREAMS'

SATURDAY 26 AUG

Chill out and dream with the greatest hits from Fleetwood Mac. Whether you spot an Albatross or Songbird out of the window or not, it will be a glorious three course dinner to remember.



QUEEN 'RADIO GAGA'

SATURDAY 16 SEP

Time to break free, bring your best friend and enjoy a three course dining car music medley with Manx Radio DJ Chris Williams who will create a kind of magic night. The show must go on so early booking recommended.



LOVE TRAIN GREATEST ROMANTIC HITS

SATURDAY 14 OCT

It's the LOOOOVE train for couples or friends to enjoy colourful harmonies and melodies from At Last to Perfect. You look wonderful tonight and share that crazy little thing called LOVE.



Down the line...

APRIL	
Pie & Mash	Thurs 6 Apr
Station Legends - ABBA 'Dancing Queen'	Sat 8 Apr
Easter Sunday Lunch	Sun 9 Apr
Easter Sunday Afternoon Tea	Sun 9 Apr
Silver Dream Lunch	Thurs 13 Apr
Pie & Mash	Thurs 13 Apr
Tex Mex	Fri 21 Apr
Murder Down The Line	Sat 22 Apr
Pie & Mash	Thurs 27 Apr
Manxman Sunday Lunch	Sun 30 Apr

MAY	
Platform Lunch Club (on Douglas Platform)	Fri 5 May
Oriental Express	Fri 5 May
Station Legends - Eurovision Greatest Hits	Sat 6 May
Manxman Sunday Lunch	Sun 7 May
Silver Dream Lunch	Thurs 11 May
Pie & Mash	Thurs 11 May
The Italian Job	Fri 19 May
Tapas of Seville	Sat 20 May
Manxman Sunday Lunch	Sun 21 May
Pie & Mash	Thurs 25 May

JUNE	
Bikers Pie & Mash	Thurs 1 June
TT Commuter Club AM	Mon 5 June
TT Commuter Club PM	Mon 5 June
TT Commuter Club AM	Tues 6 June
TT Commuter Club PM	Tues 6 June
TT Commuter Club AM	Wed 7 June
TT Commuter Club PM	Wed 7 June
TT Commuter Club AM	Thurs 8 June
TT Commuter Club PM	Thurs 8 June
Bikers TT Special Pie and Mash	Sat 10 June
Silver Dream Lunch	Thurs 15 June
Pie & Mash	Thurs 15 June
Curry Club	Fri 16 June
Father's Day Lunch	Sun 18 June
Father's Day Afternoon Tea	Sun 18 June
Pie & Mash	Thurs 22 June
Tex Mex	Fri 23 June
Manxman Sunday Lunch	Sun 25 June
Pie & Mash	Thurs 29 June
Oriental Express	Fri 30 June



JULY	
150th Anniversary Duke of Sutherland Morning Brunch	Sat 1 July
150th Anniversary G.H.Wood Gala Evening	Sat 1 July
150th Anniversary Family Afternoon Tea	Sun 2 July
Pie & Mash	Thurs 6 July
Platform Lunch Club (on Douglas Platform)	Fri 7 July
The Italian Job	Fri 7 July
Silver Dream Lunch	Thurs 13 July
Pie & Mash	Thurs 13 July
Curry Club	Fri 14 July
Station Legends - Naughty 90s	Sat 15 July
Pie & Mash	Thurs 20 July
Tex Mex	Fri 21 July
Manxman Sunday Lunch	Sun 23 July
Pie & Mash	Thurs 27 July
Oriental Express	Fri 28 July

AUGUST	
Pie & Mash	Thurs 3 August
The Italian Job	Fri 4 August
Gin & Sin Summer Fynoderee Steam	Sat 5 August
Pie & Mash	Thurs 10 August
Curry Club	Fri 11 August
Manxman Sunday Lunch	Sun 13 August
Silver Dream Lunch	Thurs 17 August
Pie & Mash	Thurs 17 August
Tex Mex	Fri 18 August
Tapas of Seville	Sat 19 August
Pie & Mash	Thurs 24 August
Oriental Express	Fri 25 August
Station Legends - Fleetwood Mac 'Dreams'	Sat 26 August
Manxman Sunday Lunch	Sun 27 August
Pie & Mash	Thurs 31 August

SEPTEMBER	
Platform Lunch Club (on Douglas Platform)	Fri 1 Sep
The Italian Job	Fri 1 Sep
Gin & Sin Autumn Fynoderee Steam	Sat 2 Sep
Back to School Afternoon Tea	Sun 3 Sep
Curry Club	Fri 8 Sep
Manxman Sunday Lunch	Sun 10 Sep
Silver Dream Lunch	Thurs 14 Sep
Pie & Mash	Thurs 14 Sep
Station Legends - Queen 'Radio GaGa'	Sat 16 Sep
Tex Mex	Fri 22 Sep
Manxman Sunday Lunch	Sun 24 Sep
Pie & Mash	Thurs 28 Sep
French Gourmet Night	Sat 30 Sep

OCTOBER	
Oriental Express	Fri 6 Oct
Manxman Sunday Lunch	Sun 8 Oct
Pie & Mash	Thurs 12 Oct
Station Legends - Love Train Greatest Romantic Hits	Sat 14 Oct
The Italian Job	Fri 20 Oct
Hop-Tu-Naa Dragon Express	Wed 25 Oct
Hop-Tu-Naa Dragon Express	Thurs 26 Oct
Pie & Mash	Thurs 26 Oct
Hop-Tu-Naa Dragon Express	Fri 27 Oct
Curry Club	Fri 27 Oct
Hop-Tu-Naa Murder Mystery	Sat 28 Oct

To book T:01624 697457 E:steamdining@gov.im

EASTER

SUNDAY 9 APR

Easter Sunday pamper time on the steam railways with a spring time three course Sunday lunch or take timeout for a relaxing afternoon tea of sweet and savoury treats. Early booking is recommended as tickets sell Eggstremely fast!

SUNDAY LUNCH

£49 | £25

PER ADULT | PER CHILD
(between 2-12 years)

Price includes three courses and return travel to Castletown

Departs Douglas 12:10 | Returns by 14:40

AFTERNOON TEA

£39 | £19.50

PER ADULT | PER CHILD
(between 2-12 years)

Price includes a selection of cakes, scones and sandwiches and return travel to Castletown

Departs Douglas 16:10 | Returns by 18:00

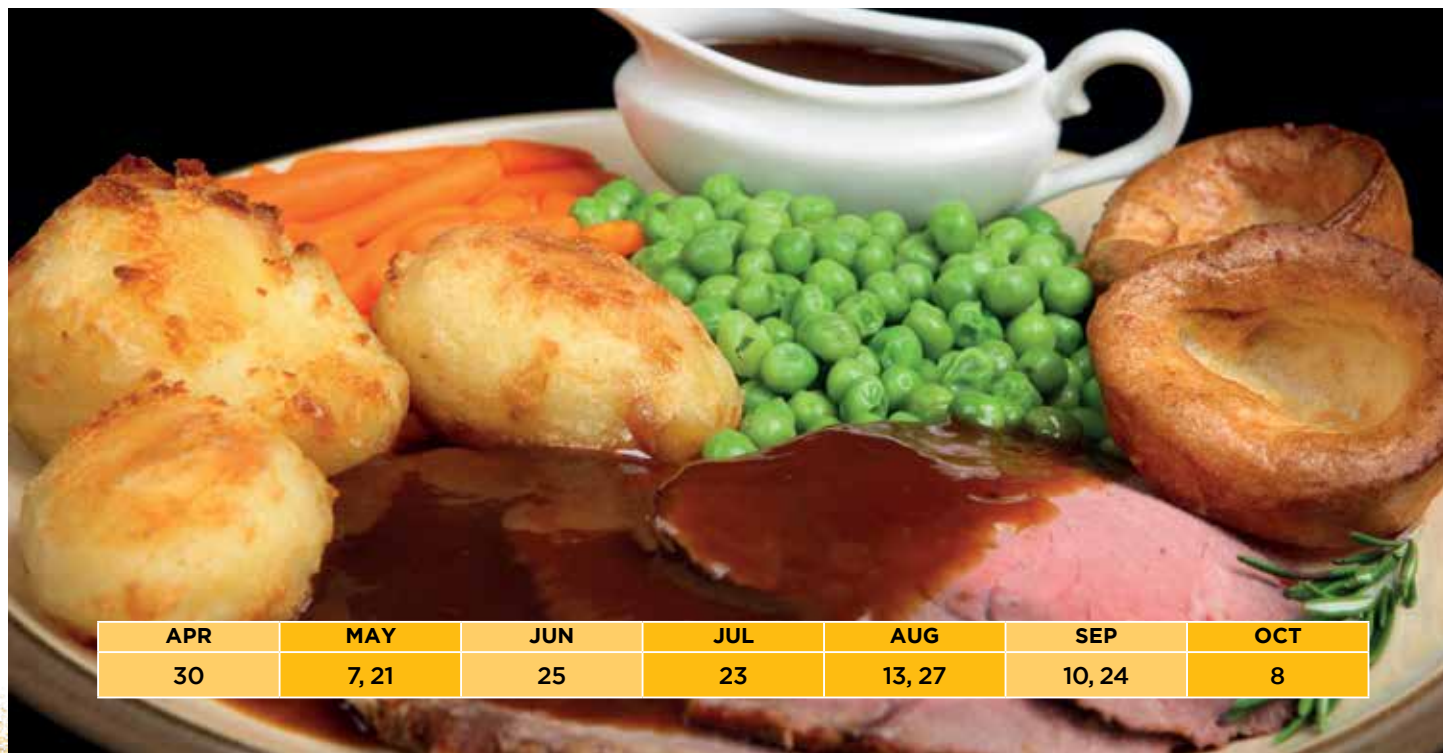


MANXMAN SUNDAY LUNCH

A luxury three-course Sunday lunch with all the trimmings for family and friends to share as you travel through beautiful Manx countryside.

£42 | **£19.50** Price includes three courses and return travel to Castletown
PER ADULT | PER CHILD
(between 2-12 years)

Departs Douglas 12:10 | Returns by 14:40



APR	MAY	JUN	JUL	AUG	SEP	OCT
30	7, 21	25	23	13, 27	10, 24	8

FATHER'S DAY

SUNDAY 18 JUN

Surprise Dad with a Sunday lunch celebration or take the afternoon tea train. A great way to thank him for everything he does while enjoying a relaxing train ride together.

SUNDAY LUNCH

£49 | £25

PER ADULT PER CHILD
(between 2-12 years)

Price includes lunch and return travel to Castletown

Departs Douglas 12:10 | Returns by 14:40

AFTERNOON TEA

£39 | £19.50

PER ADULT PER CHILD
(between 2-12 years)

Price includes a selection of cakes, scones and sandwiches and return travel to Castletown

Departs Douglas 16:10 | Returns by 18:00

BACK TO SCHOOL AFTERNOON TEA

SUNDAY 3 SEP

Get ready for the start of the Autumn Term with some scrumptious cakes and teatime treats with family and friends. PS. Don't forget the kids!

£39 | £19.50

PER ADULT PER CHILD
(between 2-12 years)

Price includes meal and return travel to Castletown

Departs Douglas 16:10 | Returns by 18:00



HOP-TU-NAA DRAGON EXPRESS

WEDNESDAY 25, THURSDAY 26 & FRIDAY 27 OCT

Whatever you'd like to dress up as for Hop-tu-Naa come along and be your spooky self. Storytelling, creative craft and dragon spotting with a gruesome two course lunch on the magical Dragon Express!

£30 | **£25**
PER ADULT | PER CHILD
(between 2-12 years)

Price includes two courses and return travel to Castletown

Departs Douglas 12:10 | Returns by 14:40



TT COMMUTER CLUB

£18^{PP}

Price includes one way travel
and meal on board

Take a leisurely Commuter Club train for a traditional breakfast on your way to work or unwind with a drink and snack as you travel home after work.

The Bar Car will be selling a full range of drinks and locally brewed ales.

MORNING COMMUTE

FROM PORT ERIN TO DOUGLAS

- Luxury Breakfast Baps and Drink included.

EVENING COMMUTE

FROM DOUGLAS TO PORT ERIN

- Bar Snacks are included on this service.

Boarding stage	Departure time	Boarding stage	Departure time
Port Erin	07:45	Douglas	17:45
Port St Mary	07:48	Port Soderick	17:58
Colby	07:56	Santon	18:06
Castletown	08:07	Ballasalla	18:15
Ballasalla	08:12	Castletown	18:22
Santon	↓	Colby	18:33
Port Soderick	↓	Port St Mary	18:41
Douglas	08:45	Port Erin	18:45

JUNE (TT Commuter Club Train)

5, 6, 7, 8



EXCLUSIVE DINING

PLATFORM LUNCH CLUB (ON DOUGLAS PLATFORM)

**SATURDAY 7 MAY,
FRIDAY 7 JULY &
FRIDAY 1 SEPTEMBER**

Introducing an all new dining experience at Douglas Railway Station with options straight from The Tickethall Café and Restaurant kitchen. Classic favourites, contemporary dishes and indulgent treats with something for everyone on the Platform Lunch Club.



Photo: Clj Publications

Sharing the Tickethall Café
seasonal menu - prebooking
not required

Open from 12:00
Until 14:30



EXCLUSIVE DINING

£39^{PP}

Price includes Morning Brunch and return travel to/from Port Erin.

Departs
Douglas 09:50

Service trains from Port Erin to Douglas available throughout the day.

150TH ANNIVERSARY DUKE OF SUTHERLAND MORNING BRUNCH

SATURDAY 1 JULY

To celebrate the 150th Anniversary plaque unveiling at Douglas Railway Station we will be sharing a 'Duke of Sutherland' morning brunch to Port Erin Victorian Fayre aboard the dining car. A limited number of tickets will be available for this journey.



MENU

150th Celebratory Bucks Fizz
or Fresh Orange Juice



Eggs Benedict

*Smoked Local Manx Bacon, Poached Egg
and Homemade Muffin topped
with a Hollandaise Sauce*

or

Eggs Florentine

*Local Manx Poached Egg with
Wild Spinach on a Homemade Muffin
with a Hollandaise Sauce*



Tea and Coffee of your choice



150TH ANNIVERSARY

£69^{PP}

Price includes four courses and
return travel to Castletown

Canapé reception from 18:30
at Douglas Railway Station.

Departs Douglas 19:00

Returns by 22:30

G.H.WOOD GALA EVENING

SATURDAY 1 JULY

A dining train in honour of George Henry Wood, IMR Company Secretary 1870 to 1925 will depart from Douglas Station to Port Erin at 19:00 with a canapé reception at the Tickethall from 18:30. His Excellency and special invited guests will be on board for the occasion with commentary recalling the early years of the IMR given by Heritage Volunteers.



MENU

AMUSE-BOUCHE

Fig, Basil and Tomato Chutney



APPETISER

*Tender Asparagus, Hollandaise Sauce,
Watercress and Parmigiano Reggiano*



MAIN COURSE

*Sirloin Medium Rare, Dauphinoise Potatoes,
Seasonal Vegetables and Cep Jus*



DESSERT

*Poppy Seed and Lemon Mousse,
Ginger Cremeux and Ginger Sable*

150TH ANNIVERSARY

£39 **£19.50**
PER ADULT PER CHILD
(between 2-12 years)

Price includes
meal and
return travel to
Castletown

Departs Douglas 16:10
Returns by 18:00

FAMILY AFTERNOON TEA

SUNDAY 2 JULY

Classic afternoon tea time to reflect and unwind from our busy lives while enjoying the bygone age of 150 years of steam travel through the stunning Isle of Man coastal and countryside.



MENU

Egg Mayonnaise, Ham and English Mustard
Finger Sandwiches



Coronation Chicken Roll



Smoked Salmon and Cream Cheese Roulade



Sausage and Sage Roll



Freshly Baked Scones with
Cornish Clotted Cream and Strawberry Jam
Followed by a Choice of Fresh Miniature Cream Cakes



Tea or Coffee of your choice

SAMPLE MENUS

If you have a dietary or allergen requirement please let The Tickethall Café and Restaurant know on **01624 627888** or by emailing thetickethall.iom@gmail.com

CURRY CLUB

MAIN COURSE

Chicken Korma

A Mild, Aromatic and Creamy Curry Dish that originates from Mughlai cuisine



Beef Rogan Josh

A Popular Kashmiri Curried Dish of Lamb, Spices, Tomato and Yogurt



Courgette and Aubergine Korma

A Mild, Aromatic and Creamy Curry Dish with Coconut and Coriander



DESSERT

Lemon Mousse with Chantilly Cream



Sticky Toffee Pudding with Toffee Sauce and Cream

PIE AND MASH / BIKERS TT SPECIAL PIE AND MASH

MAIN COURSE

The Station Master's
Beef, Booze and Root Vegetable Pie



Roasted Root Vegetable
and Butter Bean Pie



Leekie Chicken Pie

Our Hand Raised Short Crust or Puff Pastry Pie served with Creamed Potatoes and Homemade Mushy Peas



DESSERT

Chocolate Brownie with Berries
and Chocolate Sauce



Key Lime Pie

SILVER DREAM

MAIN COURSE

Sirloin Medium Rare, Roasted Potatoes,
Seasonal Vegetables and Rich Beef Jus



Chicken, Mozzarella, Parma Ham
Seasonal Vegetables and Tomato Coulis



Sweet Potato, Stuffed Courgette
Cannelloni with Tomato Sauce,
Rocket and optional Walnuts



DESSERT

Poppy Seed and Lemon Mousse,
Ginger Cremeux and Ginger Sable



Chocolate Brownie with Berries
and Chocolate Sauce

SAMPLE MENUS

If you have a dietary or allergen requirement please let The Tickethall Café and Restaurant know on **01624 627888** or by emailing **thetickethall.iom@gmail.com**

MANXMAN SUNDAY LUNCH

APPETISER

Deep Fried Brie, Cranberry,
Herbs and Croutons

— • • • —
Chicken Liver Parfait,
Red Onion Jam and Crackers



MAIN COURSE

Pan Fried Pork Loin, Cream Potatoes,
Spinach and Calvados Jus

— • • • —
Roast Chicken Breast, Creamy Leek and
Pancetta Sauce with Hasselback Potato



DESSERT

Warm Chocolate Brownie
and Vanilla Cream

— • • • —
Strawberry and Bourbon Vanilla
Cheesecake, White Chocolate
Shards and Cream

TEX MEX

MAIN COURSE

Beef and Chicken Tacos Sharing Board

*With accompaniments including
Rice, Chile Con Queso, Nachos,
Salsa, Baby Ribs and Flour Tortillas*

— • • • —
Vegetarian Sharing Board also available
(Please advise at time of booking)



DESSERT

Churros with
Dipping Chocolate Sauce

— • • • —
Raspberry Mousse
and Coulis

ORIENTAL EXPRESS

MAIN COURSE

Sesame Pork with Rice
and Prawn Cracker

— • • • —
Chicken Chow Mein
and Prawn Cracker

— • • • —
Sesame Tofu with Rice
and Prawn Cracker



DESSERT

Lemon Mousse with Chantilly Cream

— • • • —
Sticky Toffee Pudding with
Toffee Sauce and Cream

SAMPLE MENUS

THE ITALIAN JOB

MAIN COURSE

Spaghetti Bolognese

A Traditional Italian Ragù made with Braised Beef, Bacon and Tomatoes, served with Parmesan Cheese



Pasta Carbonara

An Italian Pasta Dish from Rome made with Eggs, Hard Cheese, Cured Pork and Black Pepper



Pasta alla Norma

Pasta alla Norma is a delicious Sicilian Pasta Dish with Aubergine, Marinara and Basil



DESSERT

Tiramisu with a Tantalising Hint of Liquor



Bigne, our Homemade Profiteroles with Crème Patisserie and Rich Chocolate Sauce

TAPAS OF SEVILLE

SEVILLE SHARING PLATTER WITH:

Beef and Pork Meatballs cooked in a Homemade Tomato Sauce

Patatas Bravas with our Homemade Brava Sauce and Mayonnaise

Chorizo al Vino served with Catalan Bread

Calamari served with Mayonnaise

Garlicky Mushrooms "Sevilla Style"

Chickpea Stew



Vegetarian Sharing Platter also available

(Please advise at time of booking)



SHARING DESSERT

Buñuelos and Dipping Sauce and

Spanish Cheese Cake Bites with Lemon Curd

GIN & SIN FYNDEREE SPECIALS & STATION LEGENDS

(Love Train)

APPETISER

Deep Fried Brie, Cranberry, Herbs and Croutons



Fyndoree Summer Gin Soaked Salmon, Crisp Leaf and Croutons



Chicken Liver Parfait, Red Onion Jam and Crackers



Pan Fried Loin, Cream Potatoes, Spinach and Calvados Jus



MAIN COURSE

Roast Chicken Breast, Creamy Leek and Pancetta Sauce with Hasselback Potato



Sweet Potato Rosti, Spinach and Beurre Blanc Sauce
All main courses are served with traditional vegetables



DESSERT

Lemon Mousse, Shortbread Biscuit and Coulis



Strawberry and Bourbon Vanilla Cheesecake, White Chocolate Shards and Cream

SAMPLE MENUS

If you have a dietary or allergen requirement please let The Tickethall Café and Restaurant know on **01624 627888** or by emailing **thetickethall.iom@gmail.com**

FRENCH GOURMET

APPETISER

Queens Scallops with Sauternes Butter

Chicken Liver Pâté



MAIN COURSE

Coq au Vin

Boeuf Bourguignon
*Both served with Scalloped
Potatoes and Root Vegetables*



DESSERT

Profiteroles with Chocolate Sauce
and Chantilly Crème

Crêpes with Warm Poached Pears
and Liquor Infused Crème

STATION LEGENDS

(ABBA /Eurovision /Naughty 90s /Fleetwood Mac /Queen)

APPETISER

Hand Rolled Spring Rolls with Dipping Chilli

Chicken Liver Pâté Crisp Bread, Leaf and Chutney



MAIN COURSE

Chicken Korma

A Mild, Aromatic and Creamy Curry dish that originates from Mughlai Cuisine

Sesame Fried Pork
With Rice and Prawn Cracker

Courgette and Aubergine Korma

A Mild, Aromatic and Creamy Curry Dish with Coconut and Coriander



DESSERT

Lemon Mousse with Chantilly Cream

Tiramisu a Traditionally Creamy, Boozy Love Affair

TICKET PURCHASE POLICY - DINING CAR AND SPECIAL EXCURSIONS

- Full payment is required at time of booking to confirm a reservation.
- Please check your booking details carefully with the Booking Clerk as mistakes cannot always be rectified later.
- All cancellations and changes to reservations must be advised with a minimum of 14 day's notice before the event date to receive a full refund. After 14 days 20% of the full price will be reimbursed. No refund will be due on the day of departure.
- All changes to reservations must be advised with a minimum 14 day's notice before the event date. Changes received after this may not be accepted.
- In the circumstance that Isle of Man Railways need to cancel a Dining Car event completely a full refund or credit voucher will be offered.
- We do not guarantee that the trains will arrive or depart at the times stated and we reserve the right to cancel, alter or suspend any train without notice, or to substitute a different engine should this be necessary for whatever reason.
- Excursions may be cancelled or rescheduled for a variety of reasons. If the excursion is cancelled, please contact us for information on receiving a refund or rescheduling the excursion.
- If an excursion is rescheduled, ticket holders will be offered tickets to the rescheduled excursion, equivalent to the face value of the ticket. If a service is cancelled, ticket holders will be offered travel on an alternative excursion (subject to availability) or a refund up to the value on the ticket.
- All meal options are required at the time of booking to confirm your reservation.
- Any food allergies should be notified on booking and again on boarding.
- No alcohol other than that purchased on the Dining Car may be consumed by passengers.
- We are unable to accept payment by cheque less than 21 days prior to departure. This is to allow for time to process the payment.
- Seating arrangements for parties of four or more. Seating is limited on many of our special events due to their popularity. We will always do our best to make sure you and your party sit together; unfortunately this can't always be guaranteed.

DISABLED ACCESS

- Heritage railway stations and train carriages were designed and built many decades ago. We are sorry that it may not be possible for some passengers with mobility issues to use our Dining Car services; however, we will assist in every way possible to accommodate everyone. It is helpful if you inform us of any special requirements in advance of your visit. Please call us to chat about what options there may be if you have any concerns.
Tel. 01624 697457

TRAVELLING DOGS AND OTHER PETS.

- We welcome guide and assistance dogs on our Dining Car services. Please advise us at the time of booking if you require this so we can select the most appropriate seating
- We do not allow non-assistance dogs or other pets on our Dining Car carriages.

Our full terms of booking can be viewed at www.rail.im or on request at Douglas Railway Station.

PRIVATE HIRE

Isle of Man Transport provide unique experiences for private hire and corporate hospitality events. We can tailor any package to suit your requirements and include catering arrangements.



Isle of Man
TRANSPORT

FOR MORE INFORMATION

Email: HireMe@gov.im



THE DINING CAR

EST. 2013

How to book - Contact

01624 697457

steamdining@gov.im

Advance booking essential.

Your ticket includes return train travel and meal.

You must board the Dining Car
20 minutes prior to departure.

Menu choices required at time of booking.

SEE PAGE 12 AND 13 FOR DOWN THE LINE 2023

Please advise of any dietary requirements at time of booking.
For some multiple courses not all dietary requirements can be
catered for. Brochure images are for illustrative purposes only.

[f/IoMTransport](https://www.facebook.com/IoMTransport) [f/The-Tickethall](https://www.facebook.com/The-Tickethall)

www.rail.im



Isle of Man
TRANSPORT



Images may be taken of our events and may be used on Isle of Man Transport
social media pages, website & print materials. Please let the photographer or
a member of staff know if you do not wish to have your photo taken.