

# WE ARE THE EXPLORERS

WHO SEEK OUT THE ANCIENT AND INSPIRING, IMMERSING IN THE LEGACIES AND TRADITIONS LONG FORGED IN THE MIDST OF TIME...

...Leaving no stone unturned, you unfold the history of our seabound kingdom.

As an Explorer you have a desire to learn and journey to new destinations that quench your thirst for knowledge. Your passion drives your imagination and leads you to uncover the secrets hidden beneath the surface and unravel tales from the past. You're the kind of person who relishes in the unknown and uncharted, you immerse yourself in everything you see and do in the hope of gaining insight and knowledge. Scouting out and travelling to a new destination is more than just a hobby; it is a way of life!

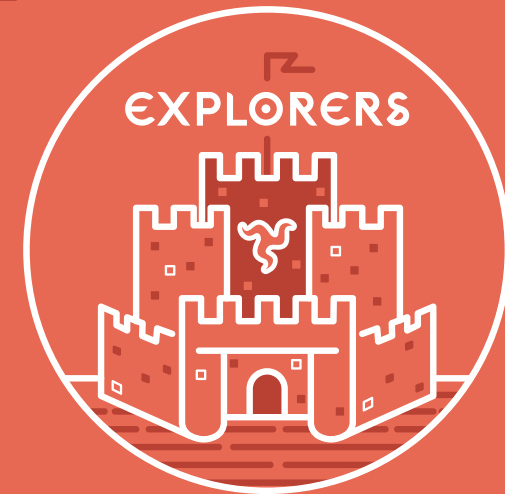
Searching high and low across our historic Isle, you'll uncover an array of incredible landmarks and structures that punctuate the coast and countryside. From the beautifully preserved castles and replica Viking ships, to the world's largest working water wheel and stunning private estates and gardens, there are plenty of unique experiences which help to narrate our 10,000 year story of the extraordinary lives of our Island's ancestors.

## MUST SEE & DO

Camera Obscura, The Great Laxey Wheel, Tynwald Hill, Gaiety Theatre, Manx National Heritage Sites, Milntown Estate & Gardens, Manx Aviation and Military Museum, Leece Museum, High Court of Tynwald.

## STRENGTHS

Naturally Curious • Inquisitive • Diverse • Sociable • Cultured • Learned



## TRAVEL PARTNER

**BELIEVERS:** These would be your ideal travel partner as they look to the traditions, myths, legends and folklore embedded in a land to help them create their perfect story. Their whimsical nature will complement your inquisitive mind as together you search high and low to unravel the true sense of a place.

WELCOME TO OUR  
**#IOMstory**

