

CITY OF PEEL HERITAGE STROLLS



Peel is a part of our magical island. The streets are steeped in the memories of time's past. It has had many lives from the Vikings to military to religious to fishing and many more.

Peel wears its history on its sleeve for all to see. These walks will give you a flavour of what happened here. If you listen carefully Peel may tell you its many secrets. We hope you enjoy these walks and stories.



Walk 3:

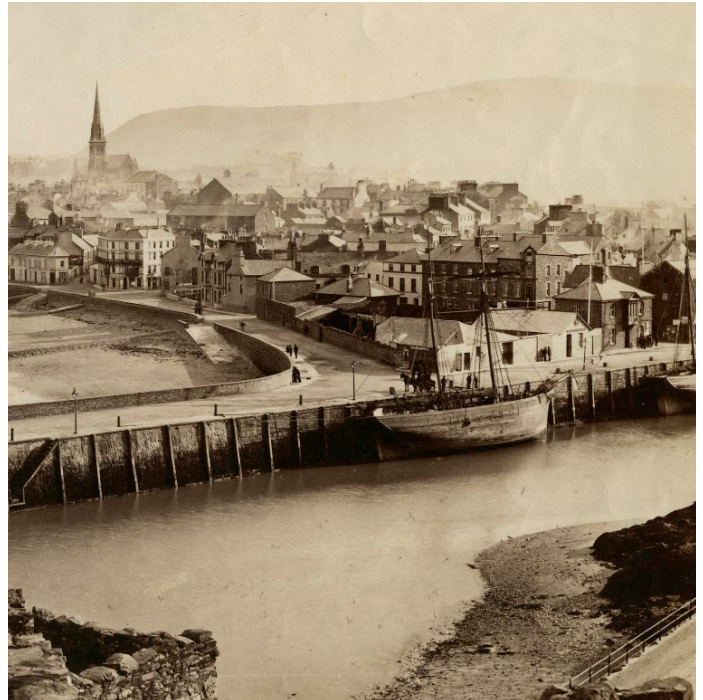


TEA AND QUAY

Allow 45 - 60 mins



Leece Museum



Weatherglass Corner. Photo courtesy of The Leece Museum

- 1 Start at the House of Manannan where there is ample parking or the Number 6 bus stops here. Go down East Quay

On the right you will see the Leece Museum further down the quay. Founded in 1984, this museum was the former courthouse and had a prisoners holding cell in the basement called the Black Hole. Today it houses a permanent exhibition of TT & MGP winning racing machines, vintage, and off-road bikes. The upper floors of the museum house a wide range of local items of interest from Peel's history, including handmade pieces from the World War One internment camp along the coast at Knockaloe. The staff are very helpful if you have any questions about Peel's history.

Next to the Leece Museum is the Peveril Hotel, a public house that was built in 1750 for 'gentle folk'. On the opposite side of the road was a salt warehouse which was demolished in 1952. Here, kippers were smoked then salted for preservation then packed into boxes for distribution.

The white Sailor's Shelter building was built in 1877 as a temperance hall by local donations as an alternative to the many licensed pubs. Both visiting and local crews could pay a subscription then take shelter there during bad weather when they could not shelter or whilst between jobs. It was also used for local events.

The sailors made their own entertainment while docked, some playing fiddles and singing. The tuneful evenings could be heard from the quayside and it is said that the local came down to the quay to listen to these impromptu 'concerts'.

- 2 Follow the road to Weatherglass Corner

This is corner has long been a meeting place where for many years people have sat, chatted and looked out to sea where you can still sit awhile and enjoy the sea air. The 'red duster' flag flies here due to the Isle of Man's naval contribution to both World Wars which are also commemorated in a plaque on the sandstone wall.

You can extend the walk by turning right onto the Promenade to enjoy the many seaside treats such as the local ice cream, fish and chips, paddling in the sea and visiting the charity shops. Toilets can also be found on the right-hand side of the road before the Sailing Club.



Peel Promenade



Peel Castle and West Quay

- 3 Turn left and cross the footbridge across the Marina entrance then turn right onto West Quay.

This may be open if a boat is passing through.

- 4 Follow the road past the castle and lifeboat station then onto the breakwater.

The breakwater was completed in 1897 to allow easy access as Peel became a thriving fishing port. Sit on the breakwater with a cup of tea or a kipper bap and relax.

You can see most of Peel from this spot, ranging from the headlands to our left to Peel Hill on your right. The ancient winding streets of Peel can be seen with the Cathedral in the background, and you can also watch the boats come in and out of the harbour.

Return the same way or extend the stroll to explore Peel Promenade for more seaside treats if you have time.



We hope you enjoyed this walk and the many eateries and shops on the way.